



Braiswick Primary School, Colchester

10 Year Plan

Meeting the demand for school places in Essex

2020-2029

For more information go to
www.essex.gov.uk/schoolorganisation

Contents

1. Executive Summary	2
1.1 Purpose and scope	2
1.2 School Organisation	2
1.3 Areas of growth and additional places planned	3
1.4 Funding and Delivery	4
2. Introduction – Planning for school places	5
2.1 Statutory duty and available funding	5
2.2 Forecasting methodology	6
2.3 Small Schools Strategy	7
2.4 Academies and Free Schools	7
2.5 Factors that influence planning for school places	8
2.6 New Housing, S106 and Community Infrastructure Levy	8
3. Forecasts and Plans	11
3.1 Mid Essex	12
3.1.1 Braintree	13
3.1.2 Chelmsford	20
3.1.3 Maldon	27
3.2 North East Essex	31
3.2.1 Colchester	32
3.2.2 Tendring	39
3.3 South Essex	45
3.3.1 Basildon	46
3.3.2 Brentwood	51
3.3.3 Castle Point	54
3.3.4 Rochford	57
3.4 West Essex	61
3.4.1 Epping Forest	62
3.4.2 Harlow	68
3.4.3 Uttlesford	71

1. Executive Summary

1.1 Purpose and scope

The purpose of the 10 year plan is to set out:

- The demand for school places in the next 10 years (from academic year 20/21 to academic year 29/30) for each of the districts, and the authority's plans to address this demand.
- Solutions already in the pipeline that will meet the forecast demand for school places.
- Potential options for addressing medium to long term forecast demand for school places.
- The context in which the Essex School Organisation Service operates to ensure there are sufficient school places.

This plan is based on forecasts produced at the end of the summer term of the 2018/19 academic year. It is updated annually, on a 10-year rolling basis, to take into account new forecasts, the capital budget setting cycle, and potential options and solutions that have been identified since the previous version.

The scope of the 10 Year Plan is mainstream education provision in Essex. SEND, Early years, 6th form and other forms of education provision are not within the scope of this plan, but are considered when deciding on solutions, to ensure efficient and sustainable choices are made for capital investment.

1.2 School Organisation

For the purposes of planning for school places, ECC organises the schools in quadrants, districts and planning groups. The quadrants and districts are listed on the following table.

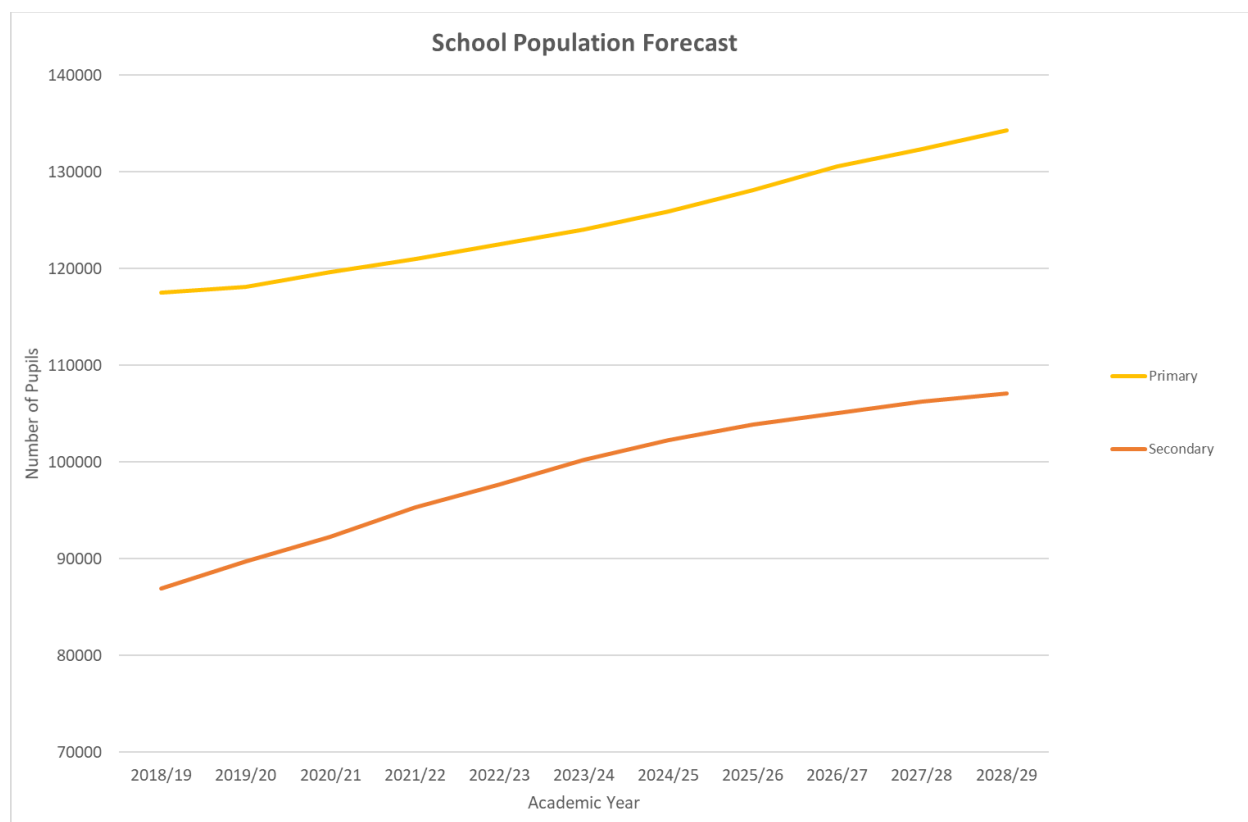
Mid Braintree, Chelmsford, Maldon	North East Colchester, Tendring
South Basildon, Brentwood, Castle Point, Rochford	West Epping Forest, Harlow, Uttlesford

The Planning Group forecasts are set out in detail in section three of this document. Planning groups provide the basis for the annual DfE School Capacity (SCAP) return that determines the level of grant funding the Council is allocated. They are groups of schools,

defined by geography and admissions patterns, wherein a sufficiency of places across the group will generally ensure every child can access a local school place (even if some schools are oversubscribed).

Essex School Organisation Service comprises a team of 10 officers who manage the school organisation and place planning activity of the local authority. Officers from the team have assigned quadrants and will liaise with schools individually and collectively to discuss current demand for places, future demand for places and any projects that need to be completed to ensure there are sufficient school places. Officers from the team also engage with planning authorities, local members, residents and communities, faith groups, developers and all tiers of government. In this way the team develops this 10 Year Plan collaboratively with schools and other stakeholders.

1.3 Areas of growth and additional places planned



In Essex There are currently 448 primary, infant and junior; 78 secondary; and one all-through school plus a University Technical College (September 2019). The total primary capacity as of May 2019 was 127,513 spaces, with 117,538 children on roll, and the total secondary capacity was 97,682 spaces with 86,634 children on roll (including 6th form). This is an increase of 1,021 primary and 1,760 secondary pupils since the same points in 2018.

The significant increase in demand for school places in Essex is predicted to continue. The forecasts used in this Plan suggest that the total number of primary school pupils on roll by 2029/30 will be 134,346 with a corresponding number of 106,878 pupils at secondary schools (including 6th forms).

Although the above figures demonstrate a need for additional school places the need is actually greater than suggested as the available capacity, that is offset in these totals, is not all in the right areas or year groups. It should be noted that the National Audit Office report 'Capital Funding for New School Places' (2013) refers to minimum 5% surplus that the Department for Education assumes in its planning as necessary to support operational flexibility.

For school management reasons, the number of pupils that can be admitted each September varies and capacity cannot thereby simply be divided by the number of year groups to calculate the actual number of pupils that can be admitted each year. When planning school places it is, therefore, prudent to focus on the Published Admission Number of schools in each area and the number of pupils in each corresponding admission year.

1.4 Funding and delivery

ECC uses a mixture of funding sources to finance additional school places. Funding sources available include basic need grant from central government, section 106 and CIL contributions from developers, Free School Education and Skills Funding Agency (ESFA) funding, and contributions from schools. New school places must be funded through these means, as ECC has no other grants / funds dedicated to providing school places.

The Capital Programme which includes the planned spending on education infrastructure is published annually and can be found at www.essex.gov.uk.

Essex County Council has a professional in-house Infrastructure Delivery Team. They assist in the development of school expansion and new school solutions by undertaking viability studies, and then leading on the delivery of the capital projects through to completion. Through the work of this team, school building projects are delivered to a high standard and at good value, ensuring the best outcome from the investment of public funds.

2. Introduction – Planning for school places

2.1 Statutory duty and available funding

Essex County Council has a statutory duty to ensure there are sufficient school places for children between 4 and 16 years old. Fulfilling this duty, and aligning strategic planning for school places with other service requirements, supports all of the strategic aims of the Essex Organisation Strategy 2017-2021:

- Enable inclusive economic growth.
- Help people get the best start and age well.
- Help create great places to grow up, live and work.
- Transform the council to achieve more with less.

To discharge this responsibility, school organisation changes are commissioned in response to forecast data that predicts the demand for school places. These school organisation changes include building new schools, expansion of existing schools, closure of schools, or reducing the intake at a school.

As stated in section 1.4 above, there are a number of funding sources for delivering school building projects, all of which need to be coordinated through the Council's Capital Programme. A long term plan for ensuring sufficient school places is required to enable capital (and revenue) financing to be secured and then spent effectively.

The 10 Year Plan is revised each autumn, following submission of the annual School Capacity Return (SCAP Return), to the DfE, which is completed by all local authorities. The SCAP Return is the basis on which basic need grants are calculated. Endorsement for the plan is sought from the Council's Investment Board upon each revision, to enable a dynamic response to changes in demand for school places, thereby ensuring that every child in Essex has an appropriate place to go to school.

2.2 Forecasting methodology

School forecasts are prepared using information on the actual numbers on roll (January 2019 Census); the number of places offered for September 2019; historical trends in admissions and GP registrations in each area (January 2019 data received from the NHS).

For year groups beyond the horizon for which GP registration data is available, an average of the last three potential cohort sizes is taken and then Office for Nation Statistics birth rate trends are applied to estimate long term need. For schools with sixth forms, historical staying on rates are calculated and applied to the relevant cohorts.

The number of additional pupils likely to be generated by new homes being built in the area is added to the forecasts. By including such data it must also be recognised that market conditions, and thereby delivery rates, change. Despite the potential for forecasts to be skewed by inaccurate housing data, it is important that the Ten Year Plan anticipates the potential increase in households in an area if Essex County Council is to ensure they meet their statutory duty to facilitate sufficient school places. In the main these figures are based on 'housing trajectories' supplied by district councils.

The likely number of pupils that will move into a development and require an additional place at the local school is calculated using factors for houses and flats. One bedroomed units and certain other types of dwellings that are unlikely to house children are discounted from the calculation. The factors currently used are 0.3 additional primary school pupils per new house and 0.15 additional pupils per new flat. For secondary pupils the factors are 0.2 additional pupils per new house and 0.1 additional pupils per new flat. Finally, the gradual buildup of pupils from new housing over a number of years is modelled through additional factors that produce a staggered effect rather than the full pupil product being added in from the first year new homes are occupied.

To meet the need for new housing, a number of Local Planning Authorities are considering establishing new Garden Communities. These will be significant new settlements that will need to be self-sustaining in terms of infrastructure. The precise scale of plans and timescales are still emerging and thereby, in some cases, our current forecasts are yet to pick up this growth. New schools will need to be planned and future iterations of this document will consider the specific needs of these areas.

2.3 Small Schools Strategy

Essex has a very large number of small schools within its administrative boundary, generally found within rural communities where they are a centre of activity. Increasing budget pressures hit small schools particularly hard, and difficulty in recruitment and changing demographics leave small schools particularly vulnerable to becoming unsustainable.

The Small Schools Strategy group explores the issues facing small schools including forecast pupil numbers, budget pressures, recruitment and retention, school standards (currently the majority of Essex small schools are good or outstanding), importance to communities and potential income opportunities. The group also makes recommendations to the Director of Education to ensure that where viable, small schools are able to take proactive decisions to secure their future and provide a high quality education.

2.4 Academies and Free Schools

Currently there are 303 academies in Essex (as of 1st January 2020). The council has a strong process in place to support the academy conversion process, which is primarily a legal function.

Free Schools were typically a method for groups of parents or other parties to set up a school that would provide diversity in the school system, often in response to existing low standards in the local area. Over recent years the Free Schools programme has changed. Not only are all new schools proposed by local authorities considered Free Schools (this has no practical impact on opening new schools), but Free Schools are now being proposed by multi-academy trusts and other groups, in response to forecast demand.

The Free Schools Programme provides an opportunity for ECC to build on a strong collaborative working relationship with the Regional Schools Commissioner and multi-academy trusts in Essex. This will enable ECC to continue to ensure sufficient school places even if/ when no schools are under its direct control.

2.5 Factors that influence planning for school places

There are a number of factors that influence strategic thinking and basic need solutions outlined in this 10 year plan. These are kept under regular review, and include:

- Fluctuation in forecast pupil numbers.
- Local Development Plans (many of which are still 'emerging').
- Phasing and timing of actual housing developments and the timing of availability of sites for new school provision (services, access, infrastructure).
- Changing patterns of growth in mid-year migration.
- Schools and Academies adjusting their Published Admission Numbers or capacities.
- Cross border migration patterns and delivery solutions.
- Changes to admissions arrangements.
- Project viability.
- Home to school transport.

The Home to School Transport Budget comprises an un-ring-fenced grant and a contribution from Dedicated Schools Grant. This budget is under constant pressure. In considering the strategic solution for the supply of school places in an area, the potential transport implications are a key factor in determining the location of solutions when assessed against the areas of demand. Where solutions do not address a local need, and transport has to be provided, the Local Authority would be faced with meeting the cost of the transport in perpetuity. This is an important element in considering the cost benefit of a solution.

2.6 New Housing, Section 106, and Community Infrastructure Levy

The twelve borough/ district/ city councils in Essex, that act as local planning authorities, are required to draw up Local Development Plans. Under the terms of the National Planning Policy Framework (NPPF), these Local Plans must identify sufficient deliverable housing sites to meet their objectively assessed housing need for at least the first five years of the Plan period. In addition, they are required to identify specific developable sites for new housing for years 6-10, to enable the five-year supply of housing land to be topped up. Essex County Council comments on the likely impact on school places of new housing allocations in Local Plans to help local planning authorities understand how sustainable their plans are in school place planning terms and, importantly, where they need to allocate land for new school place provision.

A number of the local planning authorities do not have an up to date adopted Local Plan. This has resulted in housing developers submitting speculative planning applications for

sites that may not be sustainable in terms of school place provision. In the absence of a five year land supply, the applicant has a strong chance of a successful appeal if the planning application is refused.

This can result in housing developments being granted planning permission in areas where there are insufficient surplus school places to accommodate the pupil product from the development and the development is of insufficient scale to generate a developer contribution that is sufficient to fund a new school or the expansion of an existing school. This can be particularly problematic in those areas where there isn't the site capacity to expand an existing school. Since these sites are not known in advance, they also present the problem of affording insufficient time to identify, plan and build the appropriate education infrastructure to meet the needs of the increased population. ECC seeks to limit this impact through proactive collaboration with the local planning authorities to aid them in development of their housing plans.

When the number of pupils generated by new housing is greater than the surplus capacity available in permanent accommodation in schools that might accommodate pupils from the new development, a contribution can be sought from the developer via a Section 106 agreement. This contribution can be in the form of additional land and/ or a financial contribution for new accommodation. It is up to local planning authorities to decide whether to support such requests and they are under a duty to balance all the requests, made by different infrastructure providers, against the viability of the development. Full details of how developer contributions are sought and calculated can be found in Essex County Council's Developers' Guide to Infrastructure Contributions.

The Community Infrastructure Levy allows a local planning authority to introduce a fixed charge on development to fund infrastructure that is not being delivered through s106. Of the 12 district councils in Essex only Chelmsford City Council has, to date, adopted CIL. Other councils are considering implementing CILs, but it is not thought that all 12 Essex local planning authorities will adopt a charge. Councils that do not adopt a CIL will need to rely upon Section 106 agreements to fund the infrastructure projects required to support new development in their areas.

It is anticipated that even those district councils that adopt CIL will continue to use a mixture of CIL and Section 106 agreements to fund infrastructure projects with section 106 agreements being used for large scale developments and CIL being used for smaller developments. With CIL, schools must compete with other infrastructure providers, including the district councils themselves, for the available funding.

Phasing and timelines for potential new housing developments are being closely monitored and viability reports have been commissioned for the delivery of several new schools associated with new housing. Plans are being progressed with developers to ensure that new provision can be provided at the earliest opportunity following commencement of housing development where there is insufficient capacity within existing school provision to accommodate pupils from the initial phases.

Delivery of the new provision will be dependent on confirmation of timing and phasing of housing by the developer, planning permissions and the timescale for delivery of necessary infrastructure to serve the new school provision, including services and access to the new school sites.

3. Forecasts and plans

The following sections include the school place forecasts at a planning group level, grouped into districts and quadrants. For each district the primary planning groups are shown first, followed by secondary planning groups. Below is an example:

1

1. Witham/ Rivenhall

2

Current PAN: 377

Current Capacity: 2599

3

Reception Place Forecast

Year	20/21	21/22	22/23	23/24	24/25	25/26	26/27	27/28	28/29	29/30
+/-	-3	19	-25	-20	-30	-36	-40	-44	-46	-45

4

Chipping Hill Primary, Elm Hall Primary, Holy Family Catholic Primary, Howbridge CofE Junior, Howbridge Infant, Powers Hall Academy, Powers Hall Infant, Rivenhall CofE Primary, Templars Academy

5

Number on Roll (NOR)

Year	NOR
20/21	2410
21/22	2488
22/23	2590
23/24	2667
24/25	2776

6

Projects Pipeline

School	Year	Description	Places
New Primary School	22/23	1 form entry, able to expand to 2 form entry	30/210
Expansion of New School	24/25	1 form entry expansion	30/210

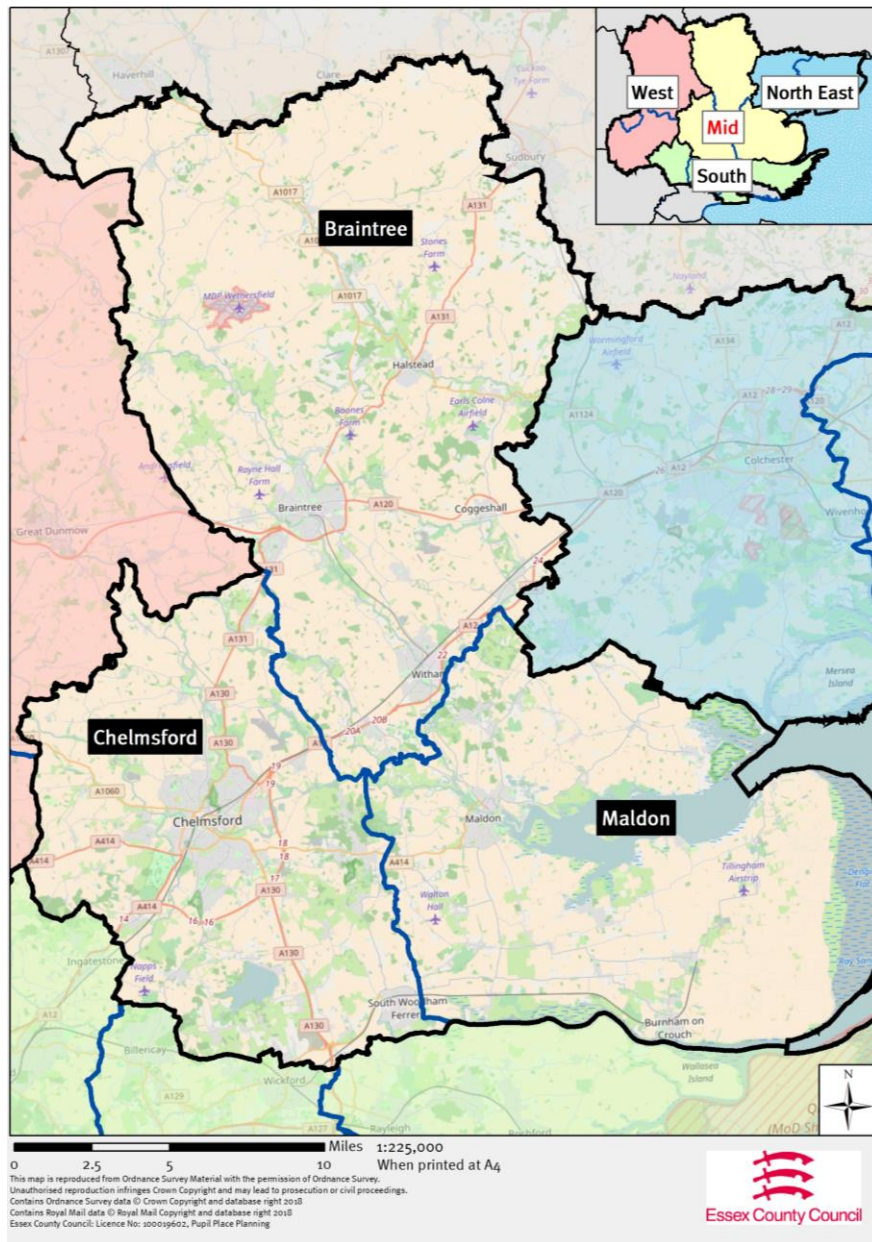
7

There are significant housing developments to the north and south of Witham. The Lodge Farm development (to the south) includes a school for a new primary school.

8

1. Name – Each planning group has a name, describing a general geographical area.
2. Current – PAN (published admission number for September 2020) is the number of spaces available at Reception or Year 7 in the planning group, capacity is the entire physical capacity of the schools available in the planning group.
3. Forecast – This headline forecast will be for either Reception places (primary) or Year 7 places (secondary). It shows the surplus or deficit of places forecast for the next 10 years, having included the demand anticipated from new housing.
4. Schools – A full list of the schools included in the planning group.
5. Number on Roll (NOR) – This data shows the entire forecast school population. This can indicate where additional school spaces are required in response to high levels of new housing or inward migration, even when the headline forecast doesn't indicate a need.
6. Projects Pipeline – These are the projects the council is proposing, to mitigate any forecast need for additional school places. A school will be named where the project is confirmed, along with the year of implementation and a brief description of the project.
7. Places – In the example (30/210), 30 refers to the number of Reception places created, and 210 refers to the total number of places created across all year groups.
8. If appropriate, additional information and context may be provided.

3.1 Mid Essex



For the purposes of school organisation and place planning, mid Essex includes the districts of Braintree and Maldon, as well as Chelmsford City.

Maldon has an adopted local development plan in force. Braintree and Chelmsford have both submitted their local plans for inspection.

3.1.1 Braintree

Primary School Planning Groups

1. Witham/ Rivenhall

Current PAN: 377
Current Capacity: 2599

Reception Place Forecast

Year	20/21	21/22	22/23	23/24	24/25	25/26	26/27	27/28	28/29	29/30
+/-	-3	19	-25	-20	-30	-36	-40	-44	-46	-45
Chipping Hill Primary, Elm Hall Primary, Holy Family Catholic Primary, Howbridge CofE Junior, Howbridge Infant, Powers Hall Academy, Powers Hall Infant, Rivenhall CofE Primary, Templars Academy										

Number on Roll (NOR)

Year	NOR
20/21	2410
21/22	2488
22/23	2590
23/24	2667
24/25	2776

Projects Pipeline

School	Year	Description	Places
New Primary School	22/23	1 form entry, able to expand to 2 form entry	30/210
Expansion of New School	25/26	1 form entry expansion	30/210

There are significant housing developments to the north and south of Witham. The Lodge Farm development (to the south) includes a site for a new primary school.

2. Kelvedon/Feering

Current PAN: 130
Current Capacity: 895

Reception Place Forecast

Year	20/21	21/22	22/23	23/24	24/25	25/26	26/27	27/28	28/29	29/30
+/-	12	8	6	1	-2	-4	-6	-7	-10	-10
Feering CE Primary, Kelvedon St Mary's CE Primary Academy, St Peter's CE Primary										

Number on Roll (NOR)

Year	NOR
20/21	843
21/22	849
22/23	872
23/24	900
24/25	909

Projects Pipeline

School	Year	Description	Places
No projects in pipeline.			

The higher numbers from 2024/25 are due to new planned housing and the exact timing of demand will be closely monitored

3. Halstead/Gosfield

Current PAN: 140
Current Capacity: 1055

Reception Place Forecast

Year	20/21	21/22	22/23	23/24	24/25	25/26	26/27	27/28	28/29	29/30
+/-	3	18	4	0	-4	-5	-5	-6	-6	-6
Gosfield Primary, Holy Trinity CE Primary, Richard de Clare Primary, St Andrew's CE Primary										

Number on Roll (NOR)

Year	NOR
20/21	966
21/22	992
22/23	1002
23/24	1007
24/25	1005

Projects Pipeline

School	Year	Description	Places
No projects in pipeline.			

There are a number of housing developments in this area which could lead to a need for school expansion, future demand is being monitored closely.

4. Hedingham

Current PAN: 75
Current Capacity: 528

Reception Place Forecast

Year	20/21	21/22	22/23	23/24	24/25	25/26	26/27	27/28	28/29	29/30
+/-	3	-5	4	-1	-2	-2	-2	-2	-2	-2
de Vere Primary, St Giles CE Primary, St Peter's CE Primary										

Number on Roll (NOR)

Year	NOR
20/21	493
21/22	501
22/23	509
23/24	523
24/25	515

Projects Pipeline

School	Year	Description	Places
Tbc	21/22	Bulge class	10/10

Demand for places at these schools often comes from outside the local area. Underlying data will be monitored to see whether a bulge class is actually required in 21/22 to meet local demand.

5. Finchingfield / Bardfield / Wethersfield

Current PAN: 44
Current Capacity: 333

Reception Place Forecast

Year	20/21	21/22	22/23	23/24	24/25	25/26	26/27	27/28	28/29	29/30
+/-	14	5	3	4	-1	-10	-20	-32	-44	-44
Finchingfield CE Primary, Great Bardfield Primary, Wethersfield CE Primary										

Number on Roll (NOR)

Year	NOR
20/21	262
21/22	264
22/23	255
23/24	272
24/25	308

Projects Pipeline

School	Year	Description	Places
tbc	23/24	small expansion	10/70
New Primary School	26/27	1 form entry, able to expand to 2 form entry	30/210
Expansion of New School	28/29	1 form entry expansion	30/210

The required new primary school is associated with the new garden settlement "West of Braintree" and the timing of the new school will reflect progress of the new garden settlement.

6. Braintree town and surrounds

Current PAN: 751
Current Capacity: 5455

Reception Place Forecast

Year	20/21	21/22	22/23	23/24	24/25	25/26	26/27	27/28	28/29	29/30
+/-	23	57	56	26	9	-6	-22	-37	-50	-49
Beckers Green Primary, Bocking Church Street Primary, Great Bradfords Infant, Great Bradfords Junior, John Bunyan Primary, John Ray Infant, John Ray Junior, Lyons Hall Primary, Notley Green Primary, Rayne Primary, Shalford Primary, St Francis Catholic Primary, St Michael's CE Primary, Stisted CE Primary, White Court Primary, White Notley CE Primary										

Number on Roll (NOR)

Year	NOR
20/21	5103
21/22	5034
22/23	5048
23/24	5114
24/25	5190

Projects Pipeline

School	Year	Description	Places
New Primary School	25/26	1 form entry, able to expand to 2 form entry	30/210
Expansion of New School	27/28	1 form entry expansion	30/210

A site for a new primary school has been secured on the Panfield Lane development through a S106 agreement.

7. Earls Colne / Colne Engaine

Current PAN: 76
Current Capacity: 532

Reception Place Forecast

Year	20/21	21/22	22/23	23/24	24/25	25/26	26/27	27/28	28/29	29/30
+/-	-8	1	6	-3	-3	-3	-3	-3	-3	-3
Colne Engaine CE Primary, Earls Colne Primary										

Number on Roll (NOR)

Year	NOR
20/21	544
21/22	551
22/23	551
23/24	551
24/25	558

Projects Pipeline

School	Year	Description	Places
tbc	20/21	Bulge class	10/10

Demand for places at these schools often comes from outside the local area. Underlying data will be monitored to see whether a bulge class is actually required in 20/21 to meet local demand.

8. Braintree rural north

Current PAN: 124
Current Capacity: 858

Reception Place Forecast

Year	20/21	21/22	22/23	23/24	24/25	25/26	26/27	27/28	28/29	29/30
+/-	4	5	19	6	5	5	5	5	5	5
Belchamp St Paul's CE Primary, Bulmer St Andrew's CE Primary, Ridgewell CE Primary, St Andrew's CE Primary, St John The Baptist CE Primary, St Margaret's CE Primary, Stanley Drapkin Primary										

Number on Roll (NOR)

Year	NOR
20/21	680
21/22	704
22/23	718
23/24	747
24/25	773

Projects Pipeline

School	Year	Description	Places
No projects in pipeline.			

9. Cressing / Silver End

Current PAN: 90
Current Capacity: 618

Reception Place Forecast

Year	20/21	21/22	22/23	23/24	24/25	25/26	26/27	27/28	28/29	29/30
+/-	25	22	6	8	4	0	-2	-3	-4	-4
Cressing Primary, Silver End Primary										

Number on Roll (NOR)

Year	NOR
20/21	506
21/22	531
22/23	562
23/24	599
24/25	608

Projects Pipeline

School	Year	Description	Places
No projects in pipeline.			

There are a number of housing developments in this area which could lead to a need for school expansion, future demand is being monitored closely.

10. Hatfield Peverel / Terling

Current PAN: 75
Current Capacity: 525

Reception Place Forecast

Year	20/21	21/22	22/23	23/24	24/25	25/26	26/27	27/28	28/29	29/30
+/-	17	8	14	10	9	9	9	9	9	9
Hatfield Peverel Infant, Hatfield Peverel St Andrew's Junior, Terling CE Primary										

Number on Roll (NOR)

Year	NOR
20/21	460
21/22	476
22/23	471
23/24	477
24/25	476

Projects Pipeline

School	Year	Description	Places
No projects in pipeline.			

Secondary School Planning Groups

1. Braintree

Current PAN: 670

Current Capacity: 3692

Year 7 Place Forecast

Year	20/21	21/22	22/23	23/24	24/25	25/26	26/27	27/28	28/29	29/30
+/-	45	12	50	35	-12	-12	-33	-64	-65	-76
Alec Hunter Academy, Notley High School, Tabor Academy										

Number on Roll (NOR)

Year	NOR
20/21	3203
21/22	3336
22/23	3450
23/24	3549
24/25	3693

Projects Pipeline

School	Year	Description	Places
Alec Hunter Academy	24/25	Increase of PAN utilising existing accommodation	30/0

The increasing demand from 2027/28 is associated with the new garden settlement "West of Braintree". This growth will be closely monitored and additional capacity added to the group at the appropriate time.

2. Witham

Current PAN: 360

Current Capacity: 2200

Year 7 Place Forecast

Year	20/21	21/22	22/23	23/24	24/25	25/26	26/27	27/28	28/29	29/30
+/-	6	-8	-39	-26	-20	-49	-40	-77	-73	-102
Maltings Academy, New Rickstones Academy										

Number on Roll (NOR)

Year	NOR
20/21	1826
21/22	1904
22/23	2032
23/24	2091
24/25	2149

Projects Pipeline

School	Year	Description	Places
New Rickstones Academy	22/23	1 form entry expansion	30/150
New Rickstones Academy	25/26	1 form entry expansion	30/150

3. Halstead / Hedingham / Coggeshall

Current PAN: 556
Current Capacity: 2968

Year 7 Place Forecast

Year	20/21	21/22	22/23	23/24	24/25	25/26	26/27	27/28	28/29	29/30
+/-	19	-5	-15	17	-22	38	3	-48	-28	-15
Hedingham School, Honywood Community Science School, The Ramsey Academy										

Number on Roll (NOR)

Year	NOR
20/21	2854
21/22	2926
22/23	2993
23/24	3029
24/25	3070

Projects Pipeline

School	Year	Description	Places
tbc	22/23	Bulge Class	30/0
tbc	24/25	Bulge Class	30/0

Increased demand for secondary school places from 27/28 onwards is primarily related to the new garden settlement “West Tey”, which will require a new secondary school at the appropriate time.

3.1.2 Chelmsford

Primary School Planning Groups

1. Broomfield/ Chelmsford rural north

Current PAN: 153
Current Capacity: 1023

Reception Place Forecast

Year	20/21	21/22	22/23	23/24	24/25	25/26	26/27	27/28	28/29	29/30
+/-	26	-2	-3	-7	-15	-24	-32	-39	-49	-49
Ford End CE Primary, Great Leighs Primary, Great Waltham CE Primary, Little Waltham CE Primary, Broomfield Primary										

Number on Roll (NOR)

Year	NOR
20/21	994
21/22	1024
22/23	1067
23/24	1117
24/25	1161

Projects Pipeline

School	Year	Description	Places
New Primary School	24/25	One form entry, able to expand to two forms of entry	30/210

The increase in demand forecast from 23/24 onwards is linked to the emerging Local Plan, with associated sites for new primary schools. Actual demand in the area will be monitored closely.

2. Rettendon / West Hanningfield

Current PAN: 35
Current Capacity: 244

Reception Place Forecast

Year	20/21	21/22	22/23	23/24	24/25	25/26	26/27	27/28	28/29	29/30
+/-	-9	-6	-16	-14	-15	-16	-16	-16	-16	-16
Rettendon Primary, St Peter's CE Primary										

Number on Roll (NOR)

Year	NOR
20/21	251
21/22	250
22/23	265
23/24	277
24/25	282

Projects Pipeline

School	Year	Description	Places
New Primary School	22/23	1 form of entry	30/210

The County Council has secured a site for a new primary school as part of the "St Luke's" housing development, which is the main factor in the forecast deficit of places.

3. Springfield

Current PAN: 420
Current Capacity: 3148

Reception Place Forecast

Year	20/21	21/22	22/23	23/24	24/25	25/26	26/27	27/28	28/29	29/30
+/-	58	26	30	16	3	-8	-20	-31	-41	-40
Barnes Farm Infant, Barnes Farm Junior, Beaulieu Park School, The Bishops CE & Catholic Primary, Chancellor Park Primary, Perryfields Infant, Perryfields Junior, Springfield Primary, Tyrrells Primary										

Number on Roll (NOR)

Year	NOR
20/21	2822
21/22	2873
22/23	2862
23/24	2930
24/25	3007

Projects Pipeline

School	Year	Description	Places
New Primary School	25/26	2 form entry, able to expand to 3 form entry	60/420

The County Council has secured a second education site for a new primary school as part of the Beaulieu housing development, which is the main factor in the forecast deficit of places.

4. Baddow / Galleywood

Current PAN: 270
Current Capacity: 1929

Reception Place Forecast

Year	20/21	21/22	22/23	23/24	24/25	25/26	26/27	27/28	28/29	29/30
+/-	12	26	-5	8	6	5	4	4	3	4
Baddow Hall Infant, Baddow Hall Junior, Beehive Lane Primary, Galleywood Infant, Larkrise Primary, Mildmay Infant, Mildmay Junior, St Michael's CE Junior										

Number on Roll (NOR)

Year	NOR
20/21	1813
21/22	1817
22/23	1830
23/24	1832
24/25	1837

Projects Pipeline

School	Year	Description	Places
No projects in pipeline.			

Demand in this area is being monitored alongside planning group 10, to determine if and when expansion is required.

5. Melbourne

Current PAN: 180
Current Capacity: 1246

Reception Place Forecast

Year	20/21	21/22	22/23	23/24	24/25	25/26	26/27	27/28	28/29	29/30
+/-	0	-13	6	-11	-16	-21	-26	-29	-32	-32
Lawford Mead Primary, Newlands Spring Primary, Parkwood Primary, St Pius X Catholic Primary										

Number on Roll (NOR)

Year	NOR
20/21	1219
21/22	1262
22/23	1279
23/24	1307
24/25	1340

Projects Pipeline

School	Year	Description	Places
tbc	21/22	Bulge class	30/30
tbc	23/24	Bulge class	30/30
New Primary School	24/25	1 form entry, able to expand to 2 form entry	30/210

A new primary school is planned as part of a housing allocation west of Chelmsford.

6. Danbury / Bicknacre / East Hanningfield

Current PAN: 114
Current Capacity: 819

Reception Place Forecast

Year	20/21	21/22	22/23	23/24	24/25	25/26	26/27	27/28	28/29	29/30
+/-	4	-10	17	2	1	0	-0	-1	-2	-2
Danbury Park Primary, East Hanningfield CE Primary, Priory Primary, St John's CE Primary										

Number on Roll (NOR)

Year	NOR
20/21	779
21/22	788
22/23	766
23/24	764
24/25	776

Projects Pipeline

School	Year	Description	Places
tbc	21/22	Bulge class	30/30

7. South Woodham

Current PAN: 239
Current Capacity: 1696

Reception Place Forecast

Year	20/21	21/22	22/23	23/24	24/25	25/26	26/27	27/28	28/29	29/30
+/-	46	25	29	28	25	21	17	14	11	11
Collingwood Primary, Elmwood Primary, St Joseph's Catholic Primary, St Mary's CE Primary, Trinity St Mary's CE Primary, Woodville Primary										

Number on Roll (NOR)

Year	NOR
20/21	1506
21/22	1486
22/23	1515
23/24	1503
24/25	1517

Projects Pipeline

School	Year	Description	Places
No projects in pipeline.			

8. Writtle / Roxwell / Highwood

Current PAN: 85
Current Capacity: 595

Reception Place Forecast

Year	20/21	21/22	22/23	23/24	24/25	25/26	26/27	27/28	28/29	29/30
+/-	0	21	9	9	9	9	9	9	8	8
Highwood Primary, Roxwell Primary, Writtle Infant, Writtle Junior										

Number on Roll (NOR)

Year	NOR
20/21	559
21/22	542
22/23	541
23/24	534
24/25	534

Projects Pipeline

School	Year	Description	Places
No projects in pipeline.			

9. Margaretting / Stock

Current PAN: 42
Current Capacity: 280

Reception Place Forecast

Year	20/21	21/22	22/23	23/24	24/25	25/26	26/27	27/28	28/29	29/30
+/-	3	9	7	6	6	6	6	6	6	6
Margaretting CE Primary, Stock CE Primary										

Number on Roll (NOR)

Year	NOR
20/21	286
21/22	277
22/23	269
23/24	261
24/25	258

Projects Pipeline

School	Year	Description	Places
No projects in pipeline.			

10. Chelmsford Central

Current PAN 480
Current Capacity: 3498

Reception Place Forecast

Year	20/21	21/22	22/23	23/24	24/25	25/26	26/27	27/28	28/29	29/30
+/-	-56	-18	-48	-55	-61	-65	-69	-72	-76	-75
Kings Road Primary, Maltese Road Primary, Meadgate Primary, Moulsham Infant, Moulsham Junior, Oaklands Infant, Our Lady Immaculate Catholic Primary, The Cathedral CE Primary, Trinity Road Primary, Westlands Primary										

Number on Roll (NOR)

Year	NOR
20/21	3464
21/22	3531
22/23	3579
23/24	3639
24/25	3714

Projects Pipeline

School	Year	Description	Places
Trinity Road	22/23	Half form entry expansion	15/105

This planning group has been created in anticipation of the “urban intensification” planned by the city council. In the short term, demand will be reviewed alongside planning group 4, to determine when expansion is required. Initially, sufficient capacity already exists within the planning group to increase the PAN by 30 places.

11. Chelmsford Not Grouped – Boreham

Current PAN: 30
Current Capacity: 236

Reception Place Forecast

Year	20/21	21/22	22/23	23/24	24/25	25/26	26/27	27/28	28/29	29/30
+/-	-10	-0	-3	-6	-6	-6	-7	-7	-7	-7
Boreham Primary										

Number on Roll (NOR)

Year	NOR
20/21	247
21/22	251
22/23	254
23/24	247
24/25	247

Projects Pipeline

School	Year	Description	Places
No projects in pipeline.			

Due to the restricted school site at Boreham Primary which prevents expansion, demand in this area will be managed alongside Braintree Primary Group 10, and Chelmsford Primary Group 3 where there is already a pattern of pupils taking up school places.

12. Chelmsford Not Grouped – Downham

Current PAN: 30
Current Capacity: 252

Reception Place Forecast

Year	20/21	21/22	22/23	23/24	24/25	25/26	26/27	27/28	28/29	29/30
+/-	1	2	0	1	1	1	1	1	0	0

Number on Roll (NOR)

Year	NOR
20/21	219
21/22	209
22/23	219
23/24	209
24/25	204

Projects Pipeline

School	Year	Description	Places
No projects in pipeline.			

Secondary School Planning Groups

1. Chelmsford

Current PAN: 2042

Current Capacity: 11477

Year 7 Place Forecast

Year	20/21	21/22	22/23	23/24	24/25	25/26	26/27	27/28	28/29	29/30
+/-	68	66	-51	-71	-54	-60	-73	-160	-120	-137
The Boswells School, Chelmer Valley High School, Chelmsford County High, Great Baddow High School, Hylands School, King Edward VI, Moulsham High School, The Sandon School, St John Payne Catholic School										

Number on Roll (NOR)

Year	NOR
20/21	11473
21/22	11777
22/23	12118
23/24	12485
24/25	12708

Projects Pipeline

School	Year	Description	Places
Beaulieu Park School	22/23	2 form entry expansion	60/300
Moulsham High School	22/23	1 form entry expansion	30/150

The increase in demand forecast from 27/28 onwards is linked to the emerging Local Plan. This plan includes a site for a new secondary school which will be opened at the appropriate time.

Chelmsford & Maldon Secondary : Woodham / Burnham

Current PAN: 405

Current Capacity: 3126

Year 7 Place Forecast

Year	20/21	21/22	22/23	23/24	24/25	25/26	26/27	27/28	28/29	29/30
+/-	-21	-67	-16	-71	-64	-62	-70	-69	-90	-96
William De Ferrers School, Ormiston Rivers Academy										

Number on Roll (NOR)

Year	NOR
20/21	2368
21/22	2446
22/23	2476
23/24	2550
24/25	2607

Projects Pipeline

School	Year	Description	Places
No projects in pipeline.			

William De Ferrers School has sufficient accommodation to enable it to increase its PAN by up to 2 forms of entry. Options for further expansion in the group are currently being developed.

3.1.3 Maldon

Primary School Planning Groups

1. Tollesbury / Tolleshunt D'Arcy

Current PAN: 60
Current Capacity: 435

Reception Place Forecast

Year	20/21	21/22	22/23	23/24	24/25	25/26	26/27	27/28	28/29	29/30
+/-	24	23	5	17	16	16	16	16	16	16
Tollesbury Primary, Tolleshunt D'Arcy St Nicholas CE Primary										

Number on Roll (NOR)

Year	NOR
20/21	318
21/22	310
22/23	310
23/24	311
24/25	308

Projects Pipeline

School	Year	Description	Places
No projects in pipeline.			

2. Maldon / Heybridge

Current PAN: 302
Current Capacity: 2264

Reception Place Forecast

Year	20/21	21/22	22/23	23/24	24/25	25/26	26/27	27/28	28/29	29/30
+/-	24	11	-8	-16	-32	-45	-55	-65	-73	-73
All Saints CE Primary, Great Totham Primary, Heybridge Primary, Maldon Primary, St Francis Catholic Primary, Wentworth Primary, Woodham Walter CE Primary										

Number on Roll (NOR)

Year	NOR
20/21	2008
21/22	2070
22/23	2140
23/24	2228
24/25	2308

Projects Pipeline

School	Year	Description	Places
tbc	22/23	Bulge Class	30/30
New Primary School	23/24	1 form entry, able to expand to 2 form entry	30/210

A site for a new primary school has been secured via a S106 agreement at the Limebrook Way development.

3. Burnham / Southminster

Current PAN: 135
Current Capacity: 945

Reception Place Forecast

Year	20/21	21/22	22/23	23/24	24/25	25/26	26/27	27/28	28/29	29/30
+/-	13	15	3	3	-0	-2	-2	-2	-3	-3
Burnham-on-Crouch Primary, Southminster CE Primary, St Mary's CE Primary										

Number on Roll (NOR)

Year	NOR
20/21	816
21/22	851
22/23	894
23/24	915
24/25	928

Projects Pipeline

School	Year	Description	Places
No projects in pipeline.			

There is some significant housing planned for this area, and viability reports have been produced to determine where school expansion could take place, if necessary, in response to future need.

4. Maylandsea / Purleigh / Latchingdon / Cold Norton

Current PAN: 106
Current Capacity: 842

Reception Place Forecast

Year	20/21	21/22	22/23	23/24	24/25	25/26	26/27	27/28	28/29	29/30
+/-	1	-1	-8	-5	-7	-7	-7	-7	-8	-8
Cold Norton Primary, Latchingdon CE Primary, Maylandsea Primary, Purleigh Primary										

Number on Roll (NOR)

Year	NOR
20/21	785
21/22	790
22/23	800
23/24	791
24/25	790

Projects Pipeline

School	Year	Description	Places
No projects in pipeline.			

The forecast demand in this planning group fluctuates. Actual demand for school places and underlying data will be monitored closely to determine if and when school expansion is required.

5. Bradwell / Tillingham

Current PAN: 50
Current Capacity: 325

Reception Place Forecast

Year	20/21	21/22	22/23	23/24	24/25	25/26	26/27	27/28	28/29	29/30
+/-	15	16	-1	10	9	9	9	9	9	9
St Cedd's CE Primary, St Nicholas CE Primary										

Number on Roll (NOR)

Year	NOR
20/21	271
21/22	259
22/23	275
23/24	282
24/25	279

Projects Pipeline

School	Year	Description	Places
No projects in pipeline.			

Secondary School Planning Groups

South Woodham Ferrers/ Burnham (see Chelmsford Secondary School Planning Groups)

1. Maldon Not Grouped: Plume

Current PAN: 295

Current Capacity: 1841

Year 7 Place Forecast

Year	20/21	21/22	22/23	23/24	24/25	25/26	26/27	27/28	28/29	29/30
+/-	-11	-6	-24	-8	-53	-52	-33	-67	-75	-97
The Plume School										

Number on Roll (NOR)

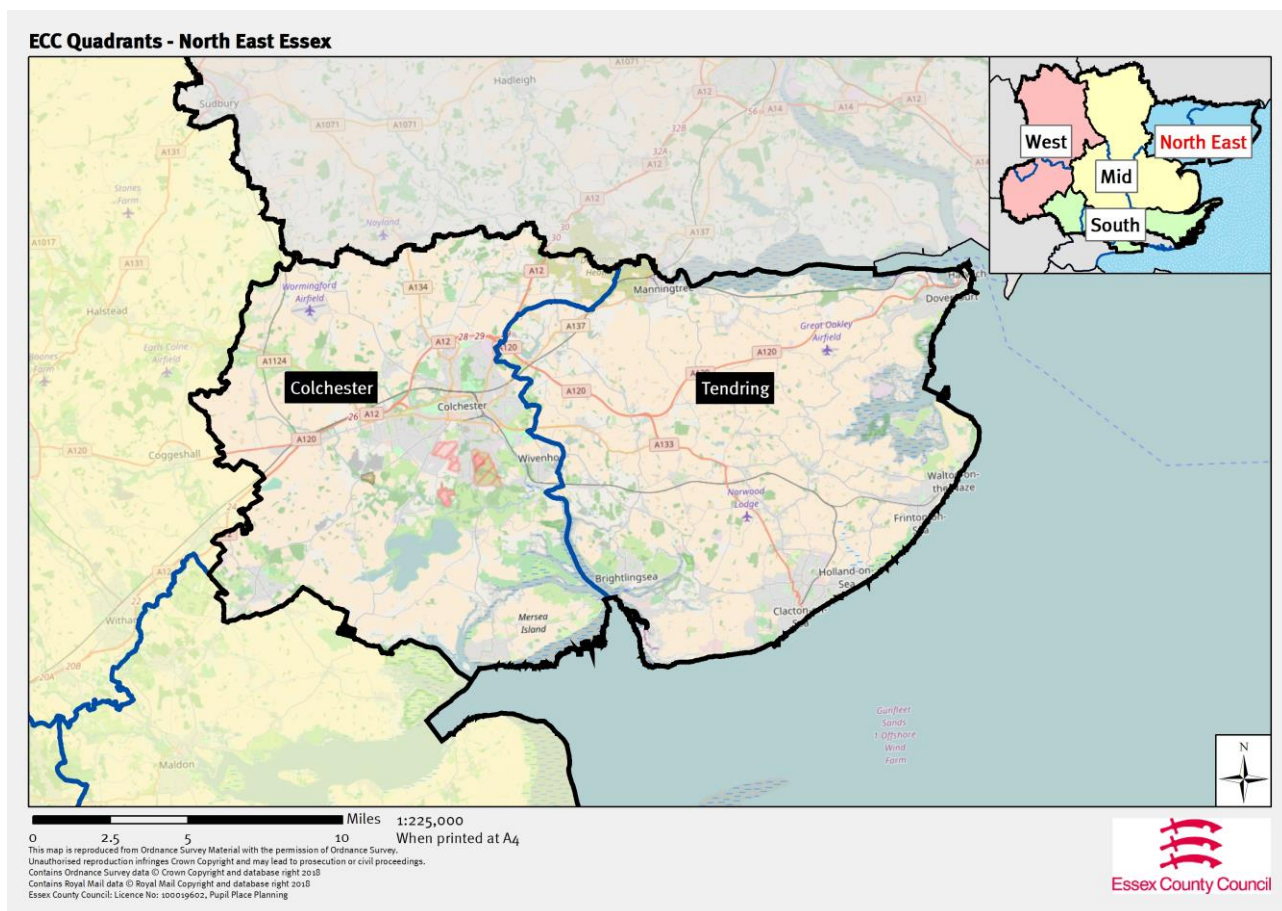
Year	NOR
20/21	1779
21/22	1804
22/23	1869
23/24	1890
24/25	1963

Projects Pipeline

School	Year	Description	Places
Plume School	22/23	Phased 2 form entry expansion	60/300

Plume is being expanded in response to high levels of new housing in the Maldon/ Heybridge area. Further demand, from 2027, is being closely monitored.

3.2 North East Essex



For the purposes of school organisation and place planning, north east Essex includes Colchester Borough and Tendring District.

A feature of the emerging local plans in this quadrant is large new garden communities, with one planned to the east and one to the west of Colchester, spanning the borders of the neighbouring districts.

3.2.1 Colchester

Primary School Planning Groups

1. Colchester north

Current PAN: 585
Current Capacity: 4126

Reception Place Forecast

Year	20/21	21/22	22/23	23/24	24/25	25/26	26/27	27/28	28/29	29/30
+/-	30	35	48	9	-7	-22	-37	-46	-51	-53
The Bishop William Ward CE Primary, Braiswick Primary, Brinkley Grove Primary, Camulos Primary, Friars Grove Primary, Heathlands CE Primary, Highwoods Primary, Myland Primary, North Primary, Queen Boudica Primary, St John's CE Primary										

Number on Roll (NOR)

Year	NOR
20/21	3944
21/22	4019
22/23	4070
23/24	4073
24/25	4136

Projects Pipeline

School	Year	Description	Places
Trinity College	24/25	2 form entry primary provision	60/420

Trinity College is an all-through free school currently in the pre-opening phase. A site for the new school has been secured through a S106 agreement. There is a significant amount of new housing planned for the area and pupil numbers are being monitored very closely.

2. Colchester rural northwest

Current PAN: 94
Current Capacity: 661

Reception Place Forecast

Year	20/21	21/22	22/23	23/24	24/25	25/26	26/27	27/28	28/29	29/30
+/-	26	16	9	15	13	12	11	10	8	8
Chappel CE Primary, Fordham All Saints CE Primary, Great Tey CE Primary, Holy Trinity CE Primary, St Andrew's CE Primary										

Number on Roll (NOR)

Year	NOR
20/21	559
21/22	554
22/23	550
23/24	548
24/25	555

Projects Pipeline

School	Year	Description	Places
No projects in pipeline.			

Declining birth rates in the villages within this group are resulting in fewer children in the schools than in previous years. This change is being monitored closely.

3. Tiptree

Current PAN: 132
Current Capacity: 969

Reception Place Forecast

Year	20/21	21/22	22/23	23/24	24/25	25/26	26/27	27/28	28/29	29/30
+/-	15	31	2	14	13	12	9	6	3	3
Baynards Primary, Messing Primary, Milldene Primary, Tiptree Heath Primary, St Luke's CE Primary										

Number on Roll (NOR)

Year	NOR
20/21	819
21/22	799
22/23	821
23/24	813
24/25	819

Projects Pipeline

School	Year	Description	Places
No projects in pipeline.			

There is expected to be some housing in the area over the next ten years, which could lead to a small increase in pupil numbers.

4. Colchester rural southwest

Current PAN: 50
Current Capacity: 360

Reception Place Forecast

Year	20/21	21/22	22/23	23/24	24/25	25/26	26/27	27/28	28/29	29/30
+/-	2	4	1	1	0	-1	-2	-2	-2	-2
Birch CE Primary, Layer-De-La-Haye CE Primary										

Number on Roll (NOR)

Year	NOR
20/21	353
21/22	354
22/23	354
23/24	355
24/25	353

Projects Pipeline

School	Year	Description	Places
No projects in pipeline.			

The schools in this planning group attract a significant number of pupils from outside of the area. Forecasts will be monitored closely to determine whether there is a local need that would require an expansion project.

5. Colchester southwest / Stanway

Current PAN: 465
Current Capacity: 3187

Reception Place Forecast

Year	20/21	21/22	22/23	23/24	24/25	25/26	26/27	27/28	28/29	29/30
+/-	18	52	26	12	-1	-13	-24	-31	-37	-38
Copford CE Primary, Gosbecks Primary, Hamilton Primary, Home Farm Primary, Lexden Primary , Prettygate Infant, Prettygate Junior, St Teresa's Catholic Primary, Stanway Fiveways Primary, Stanway Primary										

Number on Roll (NOR)

Year	NOR
20/21	2963
21/22	3010
22/23	3100
23/24	3170
24/25	3238

Projects Pipeline

School	Year	Description	Places
New Primary School	20/21	2 form entry primary school	60/420

A site for a new primary school has been secured through a S106 agreement on the Lakelands development. Other large housing developments are planned in the area and the demand for school places will be kept under constant review in light of the very high level of in-year growth in pupil numbers.

6. Colchester east

Current PAN: 210
Current Capacity: 1470

Reception Place Forecast

Year	20/21	21/22	22/23	23/24	24/25	25/26	26/27	27/28	28/29	29/30
+/-	42	30	51	40	39	38	36	35	34	34
Hazelmere Infant, Hazelmere Junior, Parsons Heath CE Primary, Roach Vale Primary, Unity Primary, Willow Brook Primary										

Number on Roll (NOR)

Year	NOR
20/21	1321
21/22	1309
22/23	1265
23/24	1223
24/25	1210

Projects Pipeline

School	Year	Description	Places
No projects in pipeline.			

7. Wivenhoe

Current PAN: 90
Current Capacity: 653

Reception Place Forecast

Year	20/21	21/22	22/23	23/24	24/25	25/26	26/27	27/28	28/29	29/30
+/-	1	1	-4	-4	-8	-13	-19	-26	-33	-33
Broomgrove Infant, Broomgrove Junior, Millfields Primary										

Number on Roll (NOR)

Year	NOR
20/21	642
21/22	655
22/23	664
23/24	680
24/25	684

Projects Pipeline

School	Year	Description	Places
No projects in pipeline.			

The number of pre-school children in the area for the next three years is atypically low. Movement of families to and from the University can cause pupil numbers to fluctuate over time and this will be monitored carefully to ensure sufficient school places are available. Longer term demand is linked to the new garden settlement in the area for which new school provision will be provided.

8. Colchester south and southeast

Current PAN: 660
Current Capacity: 4592

Reception Place Forecast

Year	20/21	21/22	22/23	23/24	24/25	25/26	26/27	27/28	28/29	29/30
+/-	47	48	36	34	27	17	4	-4	-13	-15
Cherry Tree Primary, Iceni Primary, Kendall CE Primary, King's Ford Infant, Monkwick Infant, Monkwick Junior, Montgomery Infant, Montgomery Junior, Old Heath Primary, St George's Infant, St George's New Town Junior, St James' CE Primary, St John's Green Primary, St Michael's CE Primary, St Thomas More's Catholic Primary										

Number on Roll (NOR)

Year	NOR
20/21	4222
21/22	4254
22/23	4316
23/24	4345
24/25	4399

Projects Pipeline

School	Year	Description	Places
No projects in pipeline.			

Long term demand is driven by new housing, and a site for a new primary school is included in the emerging Local Plan.

9. Colchester rural south

Current PAN: 67
Current Capacity: 451

Reception Place Forecast

Year	20/21	21/22	22/23	23/24	24/25	25/26	26/27	27/28	28/29	29/30
+/-	15	-10	-5	-2	-3	-4	-6	-7	-7	-7
Fingringhoe, Langenhoe, St Lawrence										

Number on Roll (NOR)

Year	NOR
20/21	464
21/22	485
22/23	504
23/24	507
24/25	508

Projects Pipeline

School	Year	Description	Places
No projects in pipeline.			

The schools in this planning group attract a significant number of pupils from outside of the area. Forecasts will be monitored closely to determine whether there is a local need that would require an expansion project. There is no significant additional housing expected in the area in the medium to long term.

10. Colchester rural northeast

Current PAN: 76
Current Capacity: 531

Reception Place Forecast

Year	20/21	21/22	22/23	23/24	24/25	25/26	26/27	27/28	28/29	29/30
+/-	10	3	9	5	4	3	2	2	1	1
Boxted St Peter's CE Primary, Dedham CE Primary, Langham Primary										

Number on Roll (NOR)

Year	NOR
20/21	504
21/22	509
22/23	502
23/24	500
24/25	500

Projects Pipeline

School	Year	Description	Places
No projects in pipeline.			

11. Mersea (not grouped)

Current PAN: 60
Current Capacity: 450

Reception Place Forecast

Year	20/21	21/22	22/23	23/24	24/25	25/26	26/27	27/28	28/29	29/30
+/-	15	-1	0	2	0	-1	-2	-3	-3	-3
Mersea Island										

Number on Roll (NOR)

Year	NOR
20/21	373
21/22	401
22/23	411
23/24	405
24/25	420

Projects Pipeline

School	Year	Description	Places
No projects in pipeline.			

Secondary School Planning Groups

1. Colchester

Current PAN: 2220
Current Capacity: 11330

Year 7 Place Forecast

Year	20/21	21/22	22/23	23/24	24/25	25/26	26/27	27/28	28/29	29/30
+/-	144	-17	-35	-134	-88	-127	-109	-92	-136	-58
Colchester Academy, Colchester County High School, Colchester Royal Grammar School, The Gilbert School, Philip Morant School, St Benedict's Catholic College, St Helena School, The Stanway School, The Thomas Lord Audley School										

Number on Roll (NOR)

Year	NOR
20/21	10546
21/22	11102
22/23	11545
23/24	12051
24/25	12389

Projects Pipeline

School	Year	Description	Places
Trinity College	21/22	New 6 form entry secondary provision	180/900

Trinity College is a Free School currently in the pre-opening phase. A site for the new school has been secured by S106 agreement.

2. Colchester Not Grouped: Thurstable

Current PAN: 210
Current Capacity: 1275

Year 7 Place Forecast

Year	20/21	21/22	22/23	23/24	24/25	25/26	26/27	27/28	28/29	29/30
+/-	3	-3	27	-9	-3	13	-15	11	12	-26
Thurstable School										

Number on Roll (NOR)

Year	NOR
20/21	1251
21/22	1257
22/23	1227
23/24	1225
24/25	1213

Projects Pipeline

School	Year	Description	Places
No projects in pipeline.			

3.2.2 Tendring

Primary School Planning Groups

1. Little Clacton / Tendring / Thorpe / Weeley

Current PAN: 118
Current Capacity: 822

Reception Place Forecast

Year	20/21	21/22	22/23	23/24	24/25	25/26	26/27	27/28	28/29	29/30
+/-	-1	-1	-13	-8	-9	-11	-13	-15	-17	-17
Engaines Primary, Rolph CE Primary, Tendring Primary, Weeley St Andrew's CE Primary										

Number on Roll (NOR)

Year	NOR
20/21	859
21/22	879
22/23	886
23/24	902
24/25	909

Projects Pipeline

School	Year	Description	Places
No projects in pipeline.			

In the short term no expansion is planned, as a high proportion of pupils come to these schools from outside of the area. As the pattern of demand settles there may be need for expansion in the medium to longer term, and potential solutions are being assessed.

2. Clacton

Current PAN: 645
Current Capacity: 4645

Reception Place Forecast

Year	20/21	21/22	22/23	23/24	24/25	25/26	26/27	27/28	28/29	29/30
+/-	82	24	28	33	30	23	11	1	-7	-6
Alton Park Junior, Burrsville Infant, Cann Hall Primary, Frobisher Primary, Great Clacton CE Junior, Holland Haven Primary, Holland Park Primary, The Oakwood Infant, Ravens Primary, St Clare's Catholic Primary, St Osyth CE Primary, White Hall Primary										

Number on Roll (NOR)

Year	NOR
20/21	4347
21/22	4349
22/23	4314
23/24	4274
24/25	4323

Projects Pipeline

School	Year	Description	Places
New Primary School	27/28	1 form entry, able to expand to 2 form entry	30/210

A site for a new primary school forms part of the planning application for the Rouse's Farm development. Current low birth rates in the town are expected to be offset by substantial housing over the period of the plan.

3. Brightlingsea / Elmstead

Current PAN: 197
Current Capacity: 1436

Reception Place Forecast

Year	20/21	21/22	22/23	23/24	24/25	25/26	26/27	27/28	28/29	29/30
+/-	-9	-21	-33	-34	-38	-42	-48	-53	-59	-58
Alresford Primary, Brightlingsea Infant, Brightlingsea Junior, Elmstead Primary, Great Bentley Primary, St George's CE Primary										

Number on Roll (NOR)

Year	NOR
20/21	1452
21/22	1512
22/23	1576
23/24	1611
24/25	1646

Projects Pipeline

School	Year	Description	Places
No projects in pipeline.			

The number of pre-school children in the area is lower than in previous years. The predicted deficit in places is caused by unusually high levels of expected housing, which would reverse this decline. The housing rate will be carefully monitored to assess the level of need.

The increase in demand forecast from 24/25 onwards is also linked to the proposed garden community which is part of the emerging Local Plan. If this is taken forward sites for new primary schools would be included in the planning for the new community.

4. Frinton / Walton

Current PAN: 150
Current Capacity: 1038

Reception Place Forecast

Year	20/21	21/22	22/23	23/24	24/25	25/26	26/27	27/28	28/29	29/30
+/-	14	15	21	10	7	3	-1	-3	-4	-4
Frinton-on-Sea Primary, Hamford Primary, Kirby Primary, Walton-on-the-Naze Primary										

Number on Roll (NOR)

Year	NOR
20/21	980
21/22	970
22/23	981
23/24	995
24/25	1023

Projects Pipeline

School	Year	Description	Places
tbc	27/28	1 form entry expansion	30/210

The expansion of Hamford Primary has created some headroom in the group in the short to medium term, which is essential for families moving into the new housing in the area. Options for the longer term have been assessed and pupil numbers will be monitored carefully to ensure that additional places are provided when necessary.

5. Harwich

Current PAN: 277
Current Capacity: 1881

Reception Place Forecast

Year	20/21	21/22	22/23	23/24	24/25	25/26	26/27	27/28	28/29	29/30
+/-	6	24	18	11	11	9	5	2	0	1
All Saints CE Primary (Dovercourt), Chase Lane Primary, Harwich Primary, The Mayflower Primary, Spring Meadow Primary, St Joseph's Catholic Primary, Two Village CE Primary										

Number on Roll (NOR)

Year	NOR
20/21	1833
21/22	1843
22/23	1859
23/24	1885
24/25	1887

Projects Pipeline

School	Year	Description	Places
No projects in pipeline.			

The Expansion of The Mayflower Primary from 2019 has created some headroom in the short to medium term. Options for additional school places for the longer term have been assessed and discussions will be held with the other schools in the group if additional housing creates a higher demand than anticipated.

6. Manningtree and surrounds

Current PAN: 110
Current Capacity: 735

Reception Place Forecast

Year	20/21	21/22	22/23	23/24	24/25	25/26	26/27	27/28	28/29	29/30
+/-	-4	-10	-9	-17	-22	-26	-30	-34	-36	-36
Ardleigh St Mary's CE Primary, Highfields Primary, Lawford CE Primary, Mistley Norman CE Primary										

Number on Roll (NOR)

Year	NOR
20/21	756
21/22	798
22/23	837
23/24	874
24/25	915

Projects Pipeline

School	Year	Description	Places
Lawford Primary	21/22	1 form entry expansion	30/210

There will be substantial new housing in the Lawford area and the expansion of Lawford Primary is expected to cater for the additional need created. Pupil numbers at other schools in the group are being monitored carefully.

7. Tendring rural north

Current PAN: 54
Current Capacity: 341

Reception Place Forecast

Year	20/21	21/22	22/23	23/24	24/25	25/26	26/27	27/28	28/29	29/30
+/-	14	7	14	11	11	11	10	10	10	10
All Saints CE Primary (Gt Oakley), Bradfield Primary, Wix & Wrabness										

Number on Roll (NOR)

Year	NOR
20/21	320
21/22	319
22/23	315
23/24	311
24/25	313

Projects Pipeline

School	Year	Description	Places
No projects in pipeline.			

Secondary School Planning Groups

1. Clacton

Current PAN: 879
Current Capacity: 5065

Year 7 Place Forecast

Year	20/21	21/22	22/23	23/24	24/25	25/26	26/27	27/28	28/29	29/30
+/-	-54	-95	-146	-169	-75	-155	-106	-92	-156	-139
Clacton Coastal Academy, Clacton County High School, Tendring Technology College										

Number on Roll (NOR)

Year	NOR
20/21	5026
21/22	5254
22/23	5464
23/24	5714
24/25	5839

Projects Pipeline

School	Year	Description	Places
Clacton County High School	20/21	1 form entry of expansion	30/150
Clacton County High School	21/22	2 form entry of expansion	60/300
Tendring Technology College	22/23	2 form entry expansion	60/300

Forecast demand in this area is predicated on high levels of housing, which will be monitored to ensure school expansions are implemented in line with demand.

2. Tendring Not Grouped: Colne

Current PAN: 248
Current Capacity: 1488

Year 7 Place Forecast

Year	20/21	21/22	22/23	23/24	24/25	25/26	26/27	27/28	28/29	29/30
+/-	-21	-28	-24	-68	-72	-86	-75	-83	-79	-103
Colne Community School and College										

Number on Roll (NOR)

Year	NOR
20/21	1356
21/22	1418
22/23	1441
23/24	1519
24/25	1606

Projects Pipeline

School	Year	Description	Places
Colne Community School	21/22	2 form entry expansion	60/300

Forecasts for the Colne take account of the proposed garden community which is part of the emerging Local Plan. Progress on the garden community will be monitored, with a new secondary school planned for the new community.

3. Tendring Not Grouped: Harwich

Current PAN: 224
Current Capacity: 1433

Year 7 Place Forecast

Year	20/21	21/22	22/23	23/24	24/25	25/26	26/27	27/28	28/29	29/30
+/-	-4	-7	-22	-9	-33	-52	-48	-56	-40	-46
Harwich and Dovercourt High School										

Number on Roll (NOR)

Year	NOR
20/21	1104
21/22	1155
22/23	1203
23/24	1212
24/25	1255

Projects Pipeline

School	Year	Description	Places
No projects in pipeline.			

The school is responding to lower intakes in recent years by reducing its published admission number by 36 places, which has led in part to the projected deficit of places shown. The school will still have the physical capacity to admit additional students and if necessary ECC will work with the school to ensure that all local children who need a place will be offered one.

4. Tendring Not Grouped: Manningtree

Current PAN: 174
Current Capacity: 870

Year 7 Place Forecast

Year	20/21	21/22	22/23	23/24	24/25	25/26	26/27	27/28	28/29	29/30
+/-	-3	15	-13	-18	-7	-17	-24	-22	-29	-25
Manningtree High School										

Number on Roll (NOR)

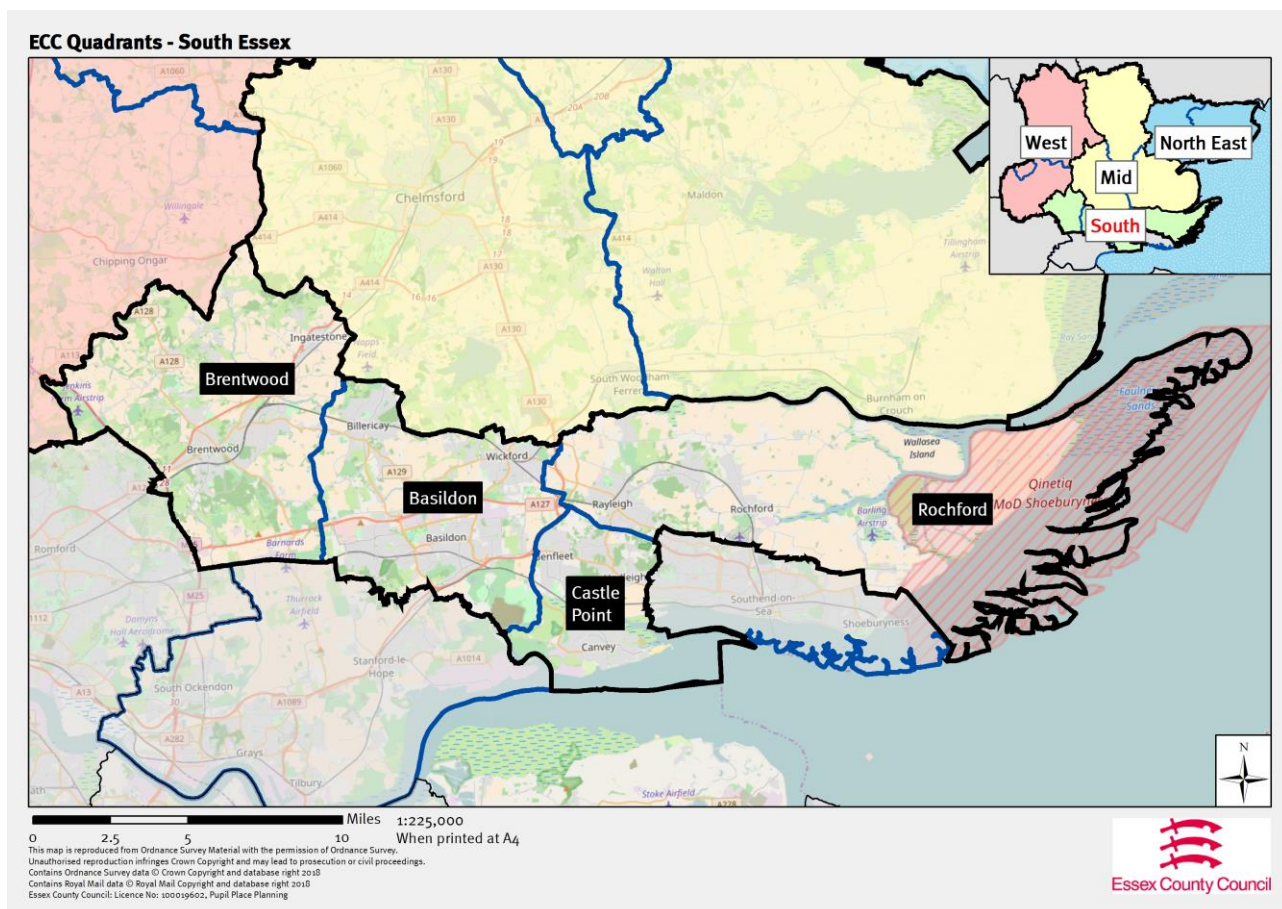
Year	NOR
20/21	891
21/22	890
22/23	910
23/24	932
24/25	943

Projects Pipeline

School	Year	Description	Places
Manningtree High School	20/21	1 form entry expansion	30/150

There will be substantial new housing in the Lawford area and the expansion of the High School is expected to cater for the additional demand created.

3.3 South Essex



For the purposes of school organisation and place planning, south Essex includes the districts and boroughs of Basildon, Brentwood, Castle Point and Rochford. Bordering London, Southend, and Thurrock authorities, the demand for school places in this quadrant of the county is influenced considerably by cross-border pupil movement.

At the time the forecasts for this document were created, none of the authorities had adopted local development plans. Additional housing may, thereby, need to be added to the longer term forecasts as plans emerge.

3.3.1 Basildon

Primary School Planning Groups

1. Billericay

Current PAN: 450
Current Capacity: 3073

Reception Place Forecast

Year	20/21	21/22	22/23	23/24	24/25	25/26	26/27	27/28	28/29	29/30
+/-	14	-33	7	-5	-9	-14	-18	-24	-34	-34
Brightside Primary, Buttsbury Infant, Buttsbury Junior, Quilters Infant, Quilters Junior, South Green Infant, South Green Junior School, St Peter's Catholic Primary, Sunnymede Infant, Sunnymede Junior										

Number on Roll (NOR)

Year	NOR
20/21	3035
21/22	3077
22/23	3090
23/24	3122
24/25	3135

Projects Pipeline

School	Year	Description	Places
Tbc	21/22	Bulge Class	30/30

A site for education provision is included as part of the Local Plan. This will enable ECC to deliver a new primary school to meet long term demand in response to new housing.

2. Wickford/ Runwell

Current PAN: 435
Current Capacity: 3124

Reception Place Forecast

Year	20/21	21/22	22/23	23/24	24/25	25/26	26/27	27/28	28/29	29/30
+/-	8	23	51	19	12	6	1	-5	-12	-12
Abacus Primary, Grange Primary, Hilltop Infant, Hilltop Junior, North Crescent Primary, Oakfield Primary, Runwell Primary, The Wickford CE Infant, Wickford Primary										

Number on Roll (NOR)

Year	NOR
20/21	2914
21/22	2953
22/23	2937
23/24	2957
24/25	2975

Projects Pipeline

School	Year	Description	Places
No projects in pipeline.			

Much of the proposed new housing in Wickford has been delayed, creating the need to postpone planned increases and reorganisation of the primary places in Wickford town. As new housing progresses, demand for school places will be monitored closely.

3. Basildon central & west

Current PAN: 1380
Current Capacity: 9205

Reception Place Forecast

Year	20/21	21/22	22/23	23/24	24/25	25/26	26/27	27/28	28/29	29/30
+/-	46	76	41	30	12	-3	-13	-28	-42	-43
Bardfield Primary, Cherry Tree Primary, Fairhouse Infant, Fairhouse Junior, Ghyllgrove Infant, Ghyllgrove Junior, Great Berry Primary, Greensted Infant, Greensted Junior, Janet Duke Primary, Kingswood Infant, Kingswood Junior, Laindon Park Primary, Lee Chapel Primary, Lincewood Primary, Merrylands Primary, Millhouse Infant, Millhouse Junior, Noak Bridge Primary, Phoenix Primary, Ryedene Primary, St Anne Line Catholic Infant, St Anne Line Catholic Junior, St Teresa's Catholic Primary, Vange Primary, Whitmore Primary, Willows Primary										

Number on Roll (NOR)

Year	NOR
20/21	9142
21/22	9264
22/23	9389
23/24	9416
24/25	9497

Projects Pipeline

School	Year	Description	Places
Merrylands Primary	20/21	1 form entry expansion. N.B. The school have already increased their PAN and these places are thereby already accounted for in the above figures.	30/210
New Primary School	25/26	1 form entry, able to expand to 2 form entry	30/210

There is a high level of mid-year inward migration to Basildon. Migration from London and abroad appears to be a significant factor. As a result demand for school places is exceeding the forecasts, therefore expansion projects will proceed to ensure sufficient capacity is maintained.

5. Basildon east

Current PAN: 315
Current Capacity: 2250

Reception Place Forecast

Year	20/21	21/22	22/23	23/24	24/25	25/26	26/27	27/28	28/29	29/30
+/-	-17	17	14	4	1	-0	-1	-5	-9	-9
Briscoe Primary, Eversley Primary, Felmore Primary, Northlands Primary, Maple Grove Primary, St Margaret's CE Primary										

Number on Roll (NOR)

Year	+/-
20/21	2161
21/22	2160
22/23	2163
23/24	2154
24/25	2138

Projects Pipeline

School	Year	Description	Places
Northlands Primary	20/21	½ form entry expansion	15/105

6. Not Grouped – Crays Hill

Current PAN: 15
Current Capacity: 105

Reception Place Forecast

Year	19/20	20/21	21/22	22/23	23/24	24/25	25/26	26/27	27/28	28/29
+/-	7	3	4	3	2	-1	-3	-5	-7	-7
Crays Hill Primary										

Number on Roll (NOR)

Year	NOR
20/21	73
21/22	75
22/23	71
23/24	82
24/25	82

Projects Pipeline

School	Year	Description	Places
No projects in pipeline.			

Secondary School Planning Groups

As the population profile in Basildon, Billericay and Wickford has changed, it was necessary to separate the forecasts for each of these areas to help differentiate the demand for secondary school places. In the previous 10 Year Plan the entire district was represented by one planning group. This means forecasts cannot be directly compared to the previous plan.

1. Basildon

Current PAN: 1110
Current Capacity: 5900

Year 7 Place Forecast

Year	20/21	21/22	22/23	23/24	24/25	25/26	26/27	27/28	28/29	29/30
+/-	137	108	67	-13	-3	-10	-40	-71	-2	-33
Basildon Lower Academy, Basildon Upper Academy, De La Salle School, The James Hornsby School, Woodlands School										

Number on Roll (NOR)

Year	NOR
20/21	4758
21/22	4994
22/23	5170
23/24	5435
24/25	5589

Projects Pipeline

School	Year	Description	Places
No projects in pipeline.			

Demand for secondary school places will be monitored as forecasts settle and new housing plans are progressed.

2. Billericay

Current PAN: 550
Current Capacity: 3293

Year 7 Place Forecast

Year	20/21	21/22	22/23	23/24	24/25	25/26	26/27	27/28	28/29	29/30
+/-	-31	-53	-7	-42	-76	-9	-29	-46	-99	-41
The Billericay School, Mayflower High School										

Number on Roll (NOR)

Year	NOR
20/21	3356
21/22	3451
22/23	3473
23/24	3536
24/25	3616

Projects Pipeline

School	Year	Description	Places
No projects in pipeline.			

Billericay schools attract a high number of pupils from Basildon. The admissions criteria of these schools enables them to accommodate local pupils before Basildon pupils, where there is currently surplus capacity.

Demand for secondary school places will be monitored as forecasts settle and new housing plans are progressed.

3. Wickford

Current PAN: 472
Current Capacity: 2681

Year 7 Place Forecast

Year	20/21	21/22	22/23	23/24	24/25	25/26	26/27	27/28	28/29	29/30
+/-	16	33	7	1	3	-15	-18	-24	-22	-2
Beauchamps High School, The Bromfords School										

Number on Roll (NOR)

Year	NOR
20/21	2557
21/22	2621
22/23	2661
23/24	2695
24/25	2709

Projects Pipeline

School	Year	Description	Places
No projects in pipeline.			

Demand for secondary school places will be monitored as forecasts settle and new housing plans are progressed.

3.3.2 Brentwood

Primary School Planning Groups

1. Brentwood Town

Current PAN: 723
Current Capacity: 4913

Reception Place Forecast

Year	20/21	21/22	22/23	23/24	24/25	25/26	26/27	27/28	28/29	29/30
+/-	46	60	46	37	17	5	-13	-26	-37	-38
Bentley St Paul's CE Primary, Hogarth Primary, Holly Trees Primary, Hutton All Saints' CE Primary , Ingrave Johnstone CE Primary, Larchwood Primary, Long Ridings Primary, St Helen's Catholic Junior, St Helen's Catholic Infant , St Joseph the Worker Catholic Primary, St Mary's CE Primary, St Peter's CE Primary, St Thomas of Canterbury CE Infant, St Thomas of Canterbury CE Junior, Warley Primary, Willowbrook Primary										

Number on Roll (NOR)

Year	NOR
20/21	4759
21/22	4803
22/23	4828
23/24	4862
24/25	4933

Projects Pipeline

School	Year	Description	Places
No projects in pipeline.			

Delivery of new housing has been slower than first expected in this area, however growth is being monitored and plans will adjust where necessary. A new primary school is expected to be required in Shenfield when housing starts to increase in that area.

2. Ingatestone / Mountnessing

Current PAN: 60
Current Capacity: 420

Reception Place Forecast

Year	20/21	21/22	22/23	23/24	24/25	25/26	26/27	27/28	28/29	29/30
+/-	-12	-13	-19	-19	-21	-22	-24	-24	-25	-25
Ingatestone CE Infant, Ingatestone Junior, Mountnessing CE Primary										

Number on Roll (NOR)

Year	NOR
20/21	429
21/22	449
22/23	483
23/24	508
24/25	528

Projects Pipeline

School	Year	Description	Places
Mountnessing	20/21	½ form entry expansion	15/105

An expansion of ½FE is required for 2020 due to the housing being developed in the area. Further primary places will be required as housing growth continues.

3. Doddingtonhurst / Kelvedon Hatch

Current PAN: 115
Current Capacity: 810

Reception Place Forecast

Year	20/21	21/22	22/23	23/24	24/25	25/26	26/27	27/28	28/29	29/30
+/-	10	-2	18	6	3	3	1	-0	-1	-1
Blackmore Primary, Doddingtonhurst Infant, Doddingtonhurst CE Junior, Kelvedon Hatch Primary										

Number on Roll (NOR)

Year	NOR
20/21	729
21/22	766
22/23	765
23/24	763
24/25	780

Projects Pipeline

School	Year	Description	Places
No projects in pipeline.			

4. Not Grouped – West Horndon

Current PAN: 30
Current Capacity: 125

Reception Place Forecast

Year	20/21	21/22	22/23	23/24	24/25	25/26	26/27	27/28	28/29	29/30
+/-	7	1	7	-4	-13	-24	-37	-50	-64	-64
West Horndon Primary										

Number on Roll (NOR)

Year	NOR
20/21	154
21/22	184
22/23	212
23/24	250
24/25	306

Projects Pipeline

School	Year	Description	Places
New Primary School	25/26	1FE Primary School able to expand	30/210

A recent expansion at West Horndon has met existing demand from local housing growth. The longer term increase in demand for primary school places is a result of the new garden settlement (Dunton Village), for which new schools will be provided.

Secondary School Planning Groups

1. Brentwood/ Shenfield

Current PAN: 1067
Current Capacity: 6927

Year 7 Place Forecast

Year	20/21	21/22	22/23	23/24	24/25	25/26	26/27	27/28	28/29	29/30
+/-	83	79	71	59	43	25	5	-14	-35	-35
Becket Keys CE Free School, Brentwood County High School, Brentwood Ursuline Convent High School, Shenfield High School, St Martin's School										

Number on Roll (NOR)

Year	NOR
20/21	6176
21/22	6231
22/23	6283
23/24	6354
24/25	6430

Projects Pipeline

School	Year	Description	Places
No projects in pipeline.			

2. Not Grouped – Anglo European

Current PAN: 224
Current Capacity: 1460

Year 7 Place Forecast

Year	20/21	21/22	22/23	23/24	24/25	25/26	26/27	27/28	28/29	29/30
+/-	14	12	11	9	8	7	6	5	5	5
Anglo European School										

Number on Roll (NOR)

Year	NOR
20/21	1489
21/22	1481
22/23	1471
23/24	1456
24/25	1451

Projects Pipeline

School	Year	Description	Places
No projects in pipeline.			

3.3.3 Castle Point

Primary School Planning Groups

1. Canvey Island

Current PAN: 450
Current Capacity: 3193

Reception Place Forecast

Year	20/21	21/22	22/23	23/24	24/25	25/26	26/27	27/28	28/29	29/30
+/-	54	33	74	54	51	50	50	49	48	48
Canvey Island Infant, Canvey Junior, Leigh Beck Infant, Leigh Beck Junior, Lubbins Park Primary, Northwick Park Primary, St Joseph's Catholic Primary, St Katherine's CE Primary, William Read Primary, Winter Gardens Primary										

Number on Roll (NOR)

Year	NOR
20/21	2880
21/22	2854
22/23	2809
23/24	2797
24/25	2773

Projects Pipeline

School	Year	Description	Places
No projects in pipeline.			

2. Thundersley / Benfleet

Current PAN: 420
Current Capacity: 2943

Reception Place Forecast

Year	20/21	21/22	22/23	23/24	24/25	25/26	26/27	27/28	28/29	29/30
+/-	6	8	-10	1	-1	-3	-3	-4	-5	-4
Kingston Primary, Montgomerie Primary, Robert Drake Primary, Thundersley Primary, Woodham Ley Primary, Holy Family Primary, Jotmans Hall Primary, Kents Hill Infant, Kents Hill Junior, South Benfleet Primary										

Number on Roll (NOR)

Year	NOR
20/21	2934
21/22	2920
22/23	2925
23/24	2928
24/25	2940

Projects Pipeline

School	Year	Description	Places
tbc	22/23	Bulge Class	30/30

Housing growth and migration in this area has slowed recently, creating a need to pause plans to expand primary school places until demand increases in the future.

3. Hadleigh

Current PAN: 120
Current Capacity: 840

Reception Place Forecast

Year	20/21	21/22	22/23	23/24	24/25	25/26	26/27	27/28	28/29	29/30
+/-	-10	-1	-26	-14	-15	-15	-15	-16	-16	-16
Hadleigh Infant, Hadleigh Junior School, Westwood Primary										

Number on Roll (NOR)

Year	+/-
20/21	810
21/22	821
22/23	854
23/24	871
24/25	900

Projects Pipeline

School	Year	Description	Places
tbc	22/23	Permanent expansion	Tbc

Increased and sustained growth in the Hadleigh area has created a need to expand primary school places. Immediate demand for 20/21 will be monitored to assess parental preference between local schools and those close by in the Thundersley area.

Secondary School Planning Groups

1. Benfleet

Current PAN: 740
Current Capacity: 4450

Year 7 Place Forecast

Year	20/21	21/22	22/23	23/24	24/25	25/26	26/27	27/28	28/29	29/30
+/-	0	-1	-2	-2	-3	-3	-3	-4	-4	-5
The Appleton School, The Deanes, The King John School										

Number on Roll (NOR)

Year	NOR
20/21	4381
21/22	4445
22/23	4438
23/24	4471
24/25	4471

Projects Pipeline

School	Year	Description	Places
No projects in pipeline.			

2. Canvey Island

Current PAN: 420
Current Capacity: 2100

Year 7 Place Forecast

Year	20/21	21/22	22/23	23/24	24/25	25/26	26/27	27/28	28/29	29/30
+/-	62	32	49	57	34	77	50	77	56	93
Castle View School, Cornelius Vermuyden										

Number on Roll (NOR)

Year	NOR
20/21	1803
21/22	1841
22/23	1845
23/24	1879
24/25	1866

Projects Pipeline

School	Year	Description	Places
No projects in pipeline.			

3.3.4 Rochford

Primary School Planning Groups

1. Rayleigh

Current PAN: 425
Current Capacity: 3098

Reception Place Forecast

Year	20/21	21/22	22/23	23/24	24/25	25/26	26/27	27/28	28/29	29/30
+/-	47	43	40	35	27	20	13	9	6	5
Down Hall Primary, Edward Francis Primary, Glebe Primary, Grove Wood Primary, Our Lady of Ransom Catholic Primary, Rayleigh Primary, St Nicholas CE Primary, Wyburns Primary										

Number on Roll (NOR)

Year	NOR
20/21	2814
21/22	2761
22/23	2766
23/24	2779
24/25	2812

Projects Pipeline

School	Year	Description	Places
No projects in pipeline.			

A site for primary education provision has been secured through a S106 agreement at the London Road development. Housing development will be monitored to determine when additional primary school capacity is required.

2. Rochford

Current PAN: 180
Current Capacity: 1241

Reception Place Forecast

Year	20/21	21/22	22/23	23/24	24/25	25/26	26/27	27/28	28/29	29/30
+/-	16	8	-3	-6	-13	-18	-21	-23	-24	-25
Holt Farm Infant, Holt Farm Junior, Rochford Primary, St Teresa's Catholic Primary, Stambridge Primary, Waterman Primary										

Number on Roll (NOR)

Year	NOR
20/21	1123
21/22	1185
22/23	1222
23/24	1283
24/25	1346

Projects Pipeline

School	Year	Description	Places
tbc	23/24	1 form entry of additional capacity	30/210

A site for primary education provision has been secured through a S106 agreement at the Hall Road development.

3. Hockley

Current PAN: 225
Current Capacity: 1599

Reception Place Forecast

Year	20/21	21/22	22/23	23/24	24/25	25/26	26/27	27/28	28/29	29/30
+/-	26	6	16	15	12	10	8	6	5	5
Ashingdon Primary, Hockley Primary, Plumberow Primary, Westerings Primary										

Number on Roll (NOR)

Year	NOR
20/21	1542
21/22	1534
22/23	1516
23/24	1518
24/25	1515

Projects Pipeline

School	Year	Description	Places
No projects in pipeline.			

The pattern of increasing migration to the area is being monitored to ensure sufficient capacity is available.

4. Barling / Gt Wakering

Current PAN: 85
Current Capacity: 595

Reception Place Forecast

Year	20/21	21/22	22/23	23/24	24/25	25/26	26/27	27/28	28/29	29/30
+/-	-3	-14	-8	-12	-14	-16	-18	-19	-19	-19
Barling Magna Primary, Great Wakering Primary										

Number on Roll (NOR)

Year	NOR
20/21	562
21/22	600
22/23	614
23/24	637
24/25	658

Projects Pipeline

School	Year	Description	Places
Barling Magna	21/22	Small expansion	5/35

A small expansion is required to meet initial demand from increased housing. Growth will be monitored to estimate the need for further expansion in the future.

5. Not Grouped - Canewdon

Current PAN: 22
Current Capacity: 157

Reception Place Forecast

Year	20/21	21/22	22/23	23/24	24/25	25/26	26/27	27/28	28/29	29/30
+/-	4	-7	5	0	-0	-0	-0	-0	-0	-1
Canewdon Endowed Primary										

Number on Roll (NOR)

Year	NOR
20/21	124
21/22	135
22/23	140
23/24	142
24/25	146

Projects Pipeline

School	Year	Description	Places
Canewdon Endowed Primary	21/22	Bulge Class	15/15

6. Not Grouped - Riverside

Current PAN: 45
Current Capacity: 454

Reception Place Forecast

Year	20/21	21/22	22/23	23/24	24/25	25/26	26/27	27/28	28/29	29/30
+/-	-10	-9	-14	-20	-22	-23	-25	-25	-25	-26
Riverside Primary										

Number on Roll (NOR)

Year	NOR
20/21	353
21/22	375
22/23	410
23/24	429
24/25	442

Projects Pipeline

School	Year	Description	Places
tbc	22/23	Half form entry expansion	15/105

The impact of housing growth is expected to be seen in both the Riverside/Hullbridge area as well as adjacent areas within the Rayleigh area. Growth will be monitored closely so that demand can be met appropriately.

Secondary School Planning Groups

1. Rayleigh

Current PAN: 548
Current Capacity: 3190

Year 7 Place Forecast

Year	20/21	21/22	22/23	23/24	24/25	25/26	26/27	27/28	28/29	29/30
+/-	-8	-14	7	1	-6	-44	-12	-24	-30	-38
The Fitzwimarc School, The Sweyne Park School										

Number on Roll (NOR)

Year	NOR
20/21	3226
21/22	3287
22/23	3312
23/24	3328
24/25	3338

Projects Pipeline

School	Year	Description	Places
Sweyne Park School	21/22	1 form entry expansion	30/150

2. Rochford / Hockley

Current PAN: 495
Current Capacity: 3280

Year 7 Place Forecast

Year	20/21	21/22	22/23	23/24	24/25	25/26	26/27	27/28	28/29	29/30
+/-	-9	-16	-24	-32	-41	-48	-53	-56	-58	-58
Greensward Academy, The King Edmund School										

Number on Roll (NOR)

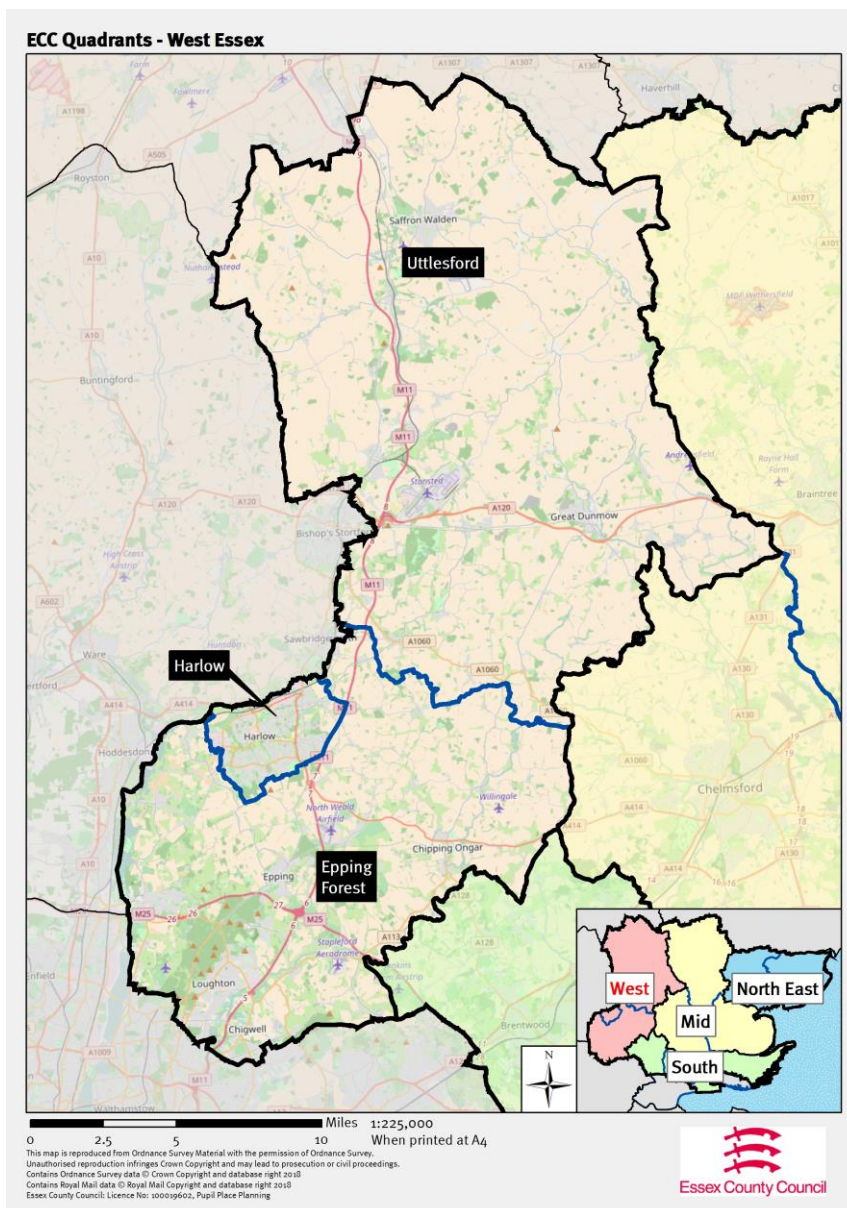
Year	NOR
20/21	3063
21/22	3108
22/23	3135
23/24	3153
24/25	3165

Projects Pipeline

School	Year	Description	Places
No projects in pipeline.			

These schools draw in a very high number of pupils from Southend. The admissions criteria of the schools will enable them to accommodate local children before Southend children as local demand grows. ECC are in contact with Southend Borough Council about this.

3.4 West Essex



For the purposes of school organisation and place planning, west Essex includes Uttlesford and Epping Forest districts, as well as Harlow. Demand for secondary school places in this quadrant of the county is influenced considerably by cross-border pupil movement to London and Hertfordshire.

All three councils have submitted their draft local development plans to the Secretary of State for Inspection.

3.4.1 Epping Forest

Primary School Planning Groups

1. Ongar

Current PAN: 142
Current Capacity: 990

Reception Place Forecast

Year	20/21	21/22	22/23	23/24	24/25	25/26	26/27	27/28	28/29	29/30
+/-	22	1	12	3	-4	-8	-11	-12	-13	-13
Chipping Ongar Primary, Dr Walker's CE Primary, High Ongar Primary, Matching Green CE Primary, Moreton CE Primary, Ongar Primary										

Number on Roll (NOR)

Year	NOR
20/21	865
21/22	908
22/23	925
23/24	944
24/25	993

Projects Pipeline

School	Year	Description	Places
No projects in pipeline.			

Longer term demand in the area is being monitored, and expansion plans will be drawn up as required.

2. Epping

Current PAN: 225
Current Capacity: 1600

Reception Place Forecast

Year	20/21	21/22	22/23	23/24	24/25	25/26	26/27	27/28	28/29	29/30
+/-	24	15	8	2	-9	-19	-28	-36	-44	-44
Coopersale and Theydon Garnon CE Primary, Epping, Epping Upland CE Primary, Ivy Chimneys Primary, St Andrew's CE Primary										

Number on Roll (NOR)

Year	NOR
20/21	1441
21/22	1465
22/23	1514
23/24	1532
24/25	1605

Projects Pipeline

School	Year	Description	Places
New Primary School	24/25	1 form entry, able to expand to 2 form entry	30/210

Planned new housing in this area is causing the forecast deficit of school places, and a site for a new primary school is included in the emerging Local Plan.

3. Waltham Abbey

Current PAN: 240
Current Capacity: 1734

Reception Place Forecast

Year	20/21	21/22	22/23	23/24	24/25	25/26	26/27	27/28	28/29	29/30
+/-	2	-38	-33	-29	-37	-43	-47	-52	-54	-54
High Beech CE Primary, Hillhouse CE Primary, Leverton Primary, Upshire Primary, Waltham Holy Cross Primary										

Number on Roll (NOR)

Year	NOR
20/21	1690
21/22	1762
22/23	1817
23/24	1868
24/25	1875

Projects Pipeline

School	Year	Description	Places
tbc	21/22	Bulge Class	30/30
tbc	22/23	1 form entry expansion	30/210

4. Buckhurst Hill / Loughton

Current PAN: 615
Current Capacity: 4153

Reception Place Forecast

Year	20/21	21/22	22/23	23/24	24/25	25/26	26/27	27/28	28/29	29/30
+/-	67	60	48	51	39	31	27	24	23	23
Alderton Infant, Alderton Junior, Buckhurst Hill Primary, Hereward Primary, St John's CE Primary, St John Fisher Catholic Primary, Staples Road Primary, Theydon Bois Primary, Thomas Willingale Primary, White Bridge Primary										

Number on Roll (NOR)

Year	NOR
20/21	3839
21/22	3864
22/23	3894
23/24	3926
24/25	3943

Projects Pipeline

School	Year	Description	Places
No projects in pipeline.			

5. Chigwell / Lambourne

Current PAN: 170
Current Capacity: 1129

Reception Place Forecast

Year	20/21	21/22	22/23	23/24	24/25	25/26	26/27	27/28	28/29	29/30
+/-	-1	-6	-7	-7	-11	-12	-13	-13	-14	-14
Chigwell Primary, Chigwell Row Infant, Lambourne Primary, Limes Farm Infant , Limes Farm Junior, Stapleford Abbots Primary										

Number on Roll (NOR)

Year	NOR
20/21	1013
21/22	1055
22/23	1105
23/24	1148
24/25	1187

Projects Pipeline

School	Year	Description	Places
No projects in pipeline.			

The schools in this planning group attract a significant number of pupils from outside of the area. Forecasts will be monitored closely to determine whether there is a local need that would require an expansion project.

6. Not Grouped - Nazeing

Current PAN: 45
Current Capacity: 300

Reception Place Forecast

Year	20/21	21/22	22/23	23/24	24/25	25/26	26/27	27/28	28/29	29/30
+/-	-0	-3	-4	-5	-6	-7	-8	-8	-8	-8
Roydon Primary										

Number on Roll (NOR)

Year	NOR
20/21	289
21/22	310
22/23	319
23/24	327
24/25	336

Projects Pipeline

School	Year	Description	Places
Nazeing Primary	22/23	½ form entry expansion	15/105

Actual numbers of pupils in the area have previously been below forecast levels. The demand is being monitored closely, and a school expansion solution has been determined, and can be delivered quickly in response to growth in pupil numbers.

7. Not Grouped - Roydon

Current PAN: 30
Current Capacity: 210

Reception Place Forecast

Year	20/21	21/22	22/23	23/24	24/25	25/26	26/27	27/28	28/29	29/30
+/-	-0	-1	-9	-5	-5	-6	-6	-6	-6	-6
Nazeing Primary										

Number on Roll (NOR)

Year	NOR
20/21	201
21/22	215
22/23	229
23/24	234
24/25	241

Projects Pipeline

School	Year	Description	Places
No projects in pipeline.			

This school can draw in pupils from outside of its priority admissions area. Actual demand will be monitored closely to ensure there are sufficient spaces for local children.

Secondary School Planning Groups

1. Loughton

Current PAN: 879
Current Capacity: 4903

Year 7 Place Forecast

Year	20/21	21/22	22/23	23/24	24/25	25/26	26/27	27/28	28/29	29/30
+/-	0	-3	-7	-11	-14	65	-21	-23	-25	-25
Davenant, Debden Park High School, Roding Valley High School, West Hatch High School										

Number on Roll (NOR)

Year	NOR
20/21	5071
21/22	5205
22/23	5324
23/24	5421
24/25	5508

Projects Pipeline

School	Year	Description	Places
No projects in pipeline.			

There has been a significant expansion of school capacity in recent years. Local demand will be monitored closely and further expansion plans will be enacted as needed.

2. Epping / Waltham Abbey

Current PAN: 360
Current Capacity: 1770

Year 7 Place Forecast

Year	20/21	21/22	22/23	23/24	24/25	25/26	26/27	27/28	28/29	29/30
+/-	23	-3	-29	-43	-60	-45	-86	-107	-143	-149
Epping St John's CE, King Harold										

Number on Roll (NOR)

Year	NOR
20/21	1650
21/22	1761
22/23	1884
23/24	2018
24/25	2164

Projects Pipeline

School	Year	Description	Places
tbc	22/23	2 form entry expansion	60/300
New Secondary School	26/27	4 forms of entry, able to expand	120/600

Planned new housing in this area is causing the forecast deficit of school places longer term, and a site for a new secondary school is included in the emerging Local Plan.

3. Epping Forest Not Grouped: Ongar

Current PAN: 120
Current Capacity: 800

Year 7 Place Forecast

Year	20/21	21/22	22/23	23/24	24/25	25/26	26/27	27/28	28/29	29/30
+/-	39	40	26	36	40	38	26	33	27	28
The Ongar Academy										

Number on Roll (NOR)

Year	NOR
20/21	640
21/22	700
22/23	696
23/24	671
24/25	637

Projects Pipeline

School	Year	Description	Places
No projects in pipeline.			

The Ongar Academy is a popular school and is generally full and expected fill during the admissions round. The forecasts do not yet demonstrate this as the school has only been open for a few years. In future iterations of the 10 Year Plan the forecasts will show a more accurate picture, until which time ECC is taking note of the actual demand for the school.

3.4.2 Harlow

Primary School Planning Groups

1. Harlow East

Current PAN: 330

Current Capacity: 2460

Reception Place Forecast

Year	20/21	21/22	22/23	23/24	24/25	25/26	26/27	27/28	28/29	29/30
+/-	38	29	22	3	-17	-35	-56	-74	-91	-90
Church Langley Primary, Churchgate CE Primary, Fawbert and Barnard Primary, Harlowbury Primary, Henry Moore Primary, Newhall Primary, Potter Street Primary										

Number on Roll (NOR)

Year	NOR
20/21	2069
21/22	2116
22/23	2199
23/24	2320
24/25	2440

Projects Pipeline

School	Year	Description	Places
Harlowbury Primary School	21/22	1 form entry expansion (and relocation)	30/210

To meet longer term demand for new housing, the council has secured a further education site from housing developers, with more sites anticipated as part of the emerging Local Plan.

Two schools in this group are both publishing a PAN of 90 (which cannot be sustained permanently), when their combined PAN is usually only 150. The permanent need for additional places is therefore higher than indicated by the headline forecast.

2. Harlow Southwest

Current PAN: 630

Current Capacity: 4398

Reception Place Forecast

Year	20/21	21/22	22/23	23/24	24/25	25/26	26/27	27/28	28/29	29/30
+/-	80	86	78	72	64	59	48	40	32	34
Abbotsweld Primary, Holy Cross Catholic Primary, Jerounds Primary, Katherines Primary, Kingsmoor Primary, Latton Green Primary, Longwood Primary, Milwards Primary, Pear Tree Mead Primary, Purford Green Primary, St James CE Primary, St Luke's Catholic Primary, Water Lane Primary, William Martin CE Infant, William Martin CE Junior										

Number on Roll (NOR)

Year	NOR
20/21	3926
21/22	3934
22/23	3947
23/24	3985
24/25	3989

Projects Pipeline

School	Year	Description	Places
No projects in pipeline.			

3. Harlow Northwest

Current PAN: 420
Current Capacity: 2984

Reception Place Forecast

Year	20/21	21/22	22/23	23/24	24/25	25/26	26/27	27/28	28/29	29/30
+/-	10	16	27	11	10	13	11	13	16	17
Cooks Spinney Primary, The Downs Primary, Freshwaters Primary, St Alban's Catholic Primary, Tany's Dell Primary, Hare Street Primary, Little Parndon Primary, Pemberley Primary										

Number on Roll (NOR)

Year	NOR
20/21	2899
21/22	2908
22/23	2901
23/24	2910
24/25	2897

Projects Pipeline

School	Year	Description	Places
No projects in pipeline.			

Secondary School Planning Groups

1. Harlow

Current PAN: 1192
Current Capacity: 5820

Year 7 Place Forecast

Year	20/21	21/22	22/23	23/24	24/25	25/26	26/27	27/28	28/29	29/30
+/-	23	0	-8	-22	-82	-89	-72	-109	-116	-117
Burnt Mill Academy, Mark Hall Academy, Passmores Academy, BMAT STEM, Sir Frederick Gibberd College, St Mark's Catholic, Stewards Academy										

Number on Roll (NOR)

Year	NOR
20/21	5633
21/22	5867
22/23	6124
23/24	6294
24/25	6453

Projects Pipeline

School	Year	Description	Places
SFGC	21/22	2 form entry expansion of SFGC, from 4fe to 6fe	60/300
SFGC	24/25	2 form entry expansion of SFGC, from 6fe to 8fe	60/300

Sir Frederick Gibberd College (SFGC) is a secondary free school that opened in in September 2019. It opened in temporary accommodation on the site of Burnt Mill Academy, before moving to new accommodation by September 2021. The new accommodation will be large enough to accommodate an 8 form entry secondary school and a 6th form.

3.4.3 Uttlesford

Primary School Planning Groups

1. Sampfords / Thaxted / Wimbish

Current PAN: 106

Current Capacity: 764

Reception Place Forecast

Year	20/21	21/22	22/23	23/24	24/25	25/26	26/27	27/28	28/29	29/30
+/-	-4	17	4	5	4	3	3	2	2	1
Debden CE Primary, Great Sampford Primary, Radwinter CE Primary, Thaxted Primary, Wimbish Primary										

Number on Roll (NOR)

Year	NOR
20/21	687
21/22	690
22/23	694
23/24	695
24/25	699

Projects Pipeline

School	Year	Description	Places
No projects in pipeline.			

2. Saffron Walden

Current PAN: 210

Current Capacity: 1490

Reception Place Forecast

Year	20/21	21/22	22/23	23/24	24/25	25/26	26/27	27/28	28/29	29/30
+/-	6	30	-2	4	-0	-2	-4	-6	-6	-6
Katherine Semar Infant, Katherine Semar Junior, R A Butler Infant, R A Butler Junior, St Mary's CE Primary, St Thomas More Catholic Primary										

Number on Roll (NOR)

Year	NOR
20/21	1437
21/22	1424
22/23	1445
23/24	1446
24/25	1444

Projects Pipeline

School	Year	Description	Places
No projects in pipeline.			

There is a significant level of new housing planned for Saffron Walden, which will lead to the requirement for a new primary school. A site for a new primary school has been secured through S106 agreements.

3. Stansted

Current PAN: 205
Current Capacity: 1631

Reception Place Forecast

Year	20/21	21/22	22/23	23/24	24/25	25/26	26/27	27/28	28/29	29/30
+/-	6	2	-16	-7	-10	-12	-14	-15	-16	-16
Bentfield Primary, Birchanger CE Primary, Elsenham CE Primary, Farnham CE Primary, Henham And Ugley Primary , Magna Carta Primary, Manuden Primary, St Mary's CE Primary										

Number on Roll (NOR)

Year	NOR
20/21	1373
21/22	1390
22/23	1427
23/24	1449
24/25	1469

Projects Pipeline

School	Year	Description	Places
No projects in pipeline.			

Elsenham Primary School was recently expanded to accommodate growth in the area driven by new housing. By 2022 the school will increase its PAN to 60 to ensure local demand in the area is fully met.

4. Dunmow

Current PAN: 140
Current Capacity: 1040

Reception Place Forecast

Year	20/21	21/22	22/23	23/24	24/25	25/26	26/27	27/28	28/29	29/30
+/-	-22	-13	-36	-40	-52	-66	-82	-98	-115	-115
Dunmow St Mary's Primary, Great Dunmow Primary, Great Easton CE Primary										

Number on Roll (NOR)

Year	NOR
20/21	1067
21/22	1103
22/23	1171
23/24	1242
24/25	1338

Projects Pipeline

School	Year	Description	Places
Dunmow St Mary's	20/21	Bulge Class	30/30
Primary Provision	21/22	One form entry of additional primary capacity	30/210

ECC has secured two education sites to provide new primary schools through S106 agreements. ECC is working with UDC to ensure education sites come forward so new school provision can be delivered to meet the long term permanent need in the area.

5. Hatfield / Sheering

Current PAN: 81
Current Capacity: 567

Reception Place Forecast

Year	20/21	21/22	22/23	23/24	24/25	25/26	26/27	27/28	28/29	29/30
+/-	9	6	-8	0	-1	-2	-3	-3	-3	-3
Hatfield Heath Primary, Little Hallingbury CE Primary, Sheering CE Primary, St Mary's CE Primary										

Number on Roll (NOR)

Year	NOR
20/21	515
21/22	525
22/23	528
23/24	528
24/25	542

Projects Pipeline

School	Year	Description	Places
No projects in pipeline.			

6. Clavering / Newport / Rickling

Current PAN: 75
Current Capacity: 513

Reception Place Forecast

Year	20/21	21/22	22/23	23/24	24/25	25/26	26/27	27/28	28/29	29/30
+/-	-6	10	9	2	1	0	-1	-1	-1	-2
Clavering Primary, Newport Primary, Rickling CE Primary										

Number on Roll (NOR)

Year	NOR
20/21	497
21/22	495
22/23	499
23/24	505
24/25	516

Projects Pipeline

School	Year	Description	Places
tbc	20/21	Bulge Class	15/15
Newport Primary	25/26	tbc	tbc

There is a significant amount of new housing planned, particularly in the Newport area. As housing plans are confirmed, forecasts will be adjusted and school expansion implemented.

7. Felsted

Current PAN: 95
Current Capacity: 698

Reception Place Forecast

Year	20/21	21/22	22/23	23/24	24/25	25/26	26/27	27/28	28/29	29/30
+/-	-11	-7	-11	-11	-12	-13	-14	-14	-15	-15
Felsted Primary, Flitch Green Primary, Stebbing Primary										

Number on Roll (NOR)

Year	NOR
20/21	698
21/22	692
22/23	687
23/24	714
24/25	733

Projects Pipeline

School	Year	Description	Places
Stebbing Primary	20/21	Expansion to one form entry	10/70

8. Takeley

Current PAN: 90
Current Capacity: 690

Reception Place Forecast

Year	20/21	21/22	22/23	23/24	24/25	25/26	26/27	27/28	28/29	29/30
+/-	-4	-3	-11	-7	-8	-8	-9	-10	-10	-10
Roseacres Primary, Takeley Primary										

Number on Roll (NOR)

Year	NOR
20/21	590
21/22	613
22/23	631
23/24	640
24/25	662

Projects Pipeline

School	Year	Description	Places
Roseacres Primary	20/21	Bulge Class	15/0

Underlying population data is being closely monitored to assess if there is a need for permanent expansion in the medium to long term.

9. Not Grouped - Ashdon

Current PAN: 15
Current Capacity: 105

Reception Place Forecast

Year	20/21	21/22	22/23	23/24	24/25	25/26	26/27	27/28	28/29	29/30
+/-	2	7	2	4	4	3	3	3	3	3
Ashdon Primary										

Number on Roll (NOR)

Year	NOR
20/21	78
21/22	73
22/23	75
23/24	74
24/25	71

Projects Pipeline

School	Year	Description	Places
No projects in pipeline.			

10. Not Grouped - Chrishall

Current PAN: 15
Current Capacity: 105

Reception Place Forecast

Year	20/21	21/22	22/23	23/24	24/25	25/26	26/27	27/28	28/29	29/30
+/-	-1	0	0	-0	-1	-1	-1	-1	-1	-1
Chrishall Holy Trinity & St Nicholas CE Primary										

Number on Roll (NOR)

Year	NOR
20/21	103
21/22	102
22/23	101
23/24	102
24/25	104

Projects Pipeline

School	Year	Description	Places
No projects in pipeline.			

11. Not Grouped – Great Chesterford

Current PAN: 30
Current Capacity: 210

Reception Place Forecast

Year	20/21	21/22	22/23	23/24	24/25	25/26	26/27	27/28	28/29	29/30
+/-	-2	3	-1	-3	-6	-11	-16	-23	-30	-30
Great Chesterford CE Primary										

Number on Roll (NOR)

Year	NOR
20/21	216
21/22	211
22/23	215
23/24	229
24/25	251

Projects Pipeline

School	Year	Description	Places
No projects in pipeline.			

Forecast increasing demand in the latter part of the 10 Year Plan is due to the potential new garden settlement near Great Chesterford. New school provision will be delivered as part of the new community.

12. Not Grouped – Rodings

Current PAN: 30
Current Capacity: 255

Reception Place Forecast

Year	20/21	21/22	22/23	23/24	24/25	25/26	26/27	27/28	28/29	29/30
+/-	-4	1	-10	-4	-5	-5	-5	-5	-6	-6
Rodings Primary										

Number on Roll (NOR)

Year	NOR
20/21	255
21/22	240
22/23	249
23/24	253
24/25	248

Projects Pipeline

School	Year	Description	Places
No projects in pipeline.			

The school has additional accommodation to enable it to admit additional pupils when there are large spikes in local demand, i.e. there are several bulge classes in the school which are agreed and planned for with the local authority and the school.

Secondary School Planning Groups

1. Uttlesford Not Grouped: Helena Romanes

Current PAN: 270
Current Capacity: 1563

Year7 Place Forecast

Year	20/21	21/22	22/23	23/24	24/25	25/26	26/27	27/28	28/29	29/30
+/-	33	0	11	6	1	-11	-69	-60	-61	-107
Helena Romanes School										

Number on Roll (NOR)

Year	NOR
20/21	1256
21/22	1338
22/23	1390
23/24	1446
24/25	1526

Projects Pipeline

School	Year	Description	Places
No projects in pipeline.			

The main driver of long term demand in the forecasts is the new garden settlement west of Great Dunmow. As plans for this new garden settlement progresses (with the associated new schools) the forecasts will be adjusted.

2. Uttlesford Not Grouped: Forest Hall

Current PAN: 112
Current Capacity: 660

Year 7 Place Forecast

Year	20/21	21/22	22/23	23/24	24/25	25/26	26/27	27/28	28/29	29/30
+/-	-13	-10	-32	-30	-21	-27	-36	-43	-48	-62
Forest Hall School										

Number on Roll (NOR)

Year	NOR
20/21	550
21/22	582
22/23	620
23/24	658
24/25	687

Projects Pipeline

School	Year	Description	Places
Forest Hall School	21/22	Half form entry expansion	18/90

Admissions to Forest Hall School are closely linked to school place demand in Hertfordshire. There is substantial new housing being built north of Bishop's Stortford with a new school planned to open. Local school place capacity and demand for places will be monitored and reviewed with Hertfordshire County Council, and further expansion of Forest Hall School will be implemented as necessary.

3. Newport / Saffron Walden

Current PAN: 500
Current Capacity: 3080

Year 7 Place Forecast

Year	20/21	21/22	22/23	23/24	24/25	25/26	26/27	27/28	28/29	29/30
+/-	33	-7	19	16	10	-14	27	-52	22	-25
Joyce Frankland Academy, Saffron Walden County High										

Number on Roll (NOR)

Year	NOR
20/21	3004
21/22	3106
22/23	3136
23/24	3190
24/25	3223

Projects Pipeline

School	Year	Description	Places
No projects in pipeline.			

These schools admit a high number of pupils from out of area. Local demand will be monitored very closely to ensure there are sufficient spaces.